

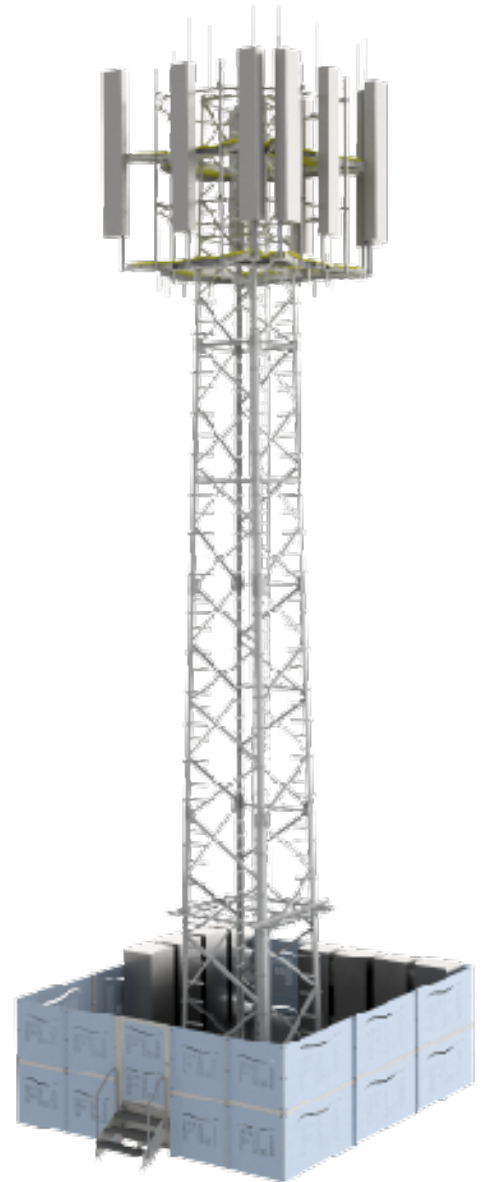
FLI Temporary Tower & Foundation Solution

FLI's temporary lattice tower & gravity foundation solution is engineered for fast deployment in restricted access environments – ideal for special projects and temporary events, with **tight deadlines & minimal ground disturbance**.

FLI Temp Tower, Rapid & Repeatable.

Key Features:

- Tower heights up to 30m.
- Various tower options, ATS1301 or SLP4.
- Kentledge Foundation – uses steel ballast.
- No wet trades, piling, or ground intrusion.
- Cabinets & generators mounted onto base.
- Bolted onsite - modular & reusable.
- Transported with just 2 vehicles.
- Easy to demobilise and re-mobilise for events.
- Free standing solution, is neat and smart compared to other temporary mast solutions.
- Pre-assembled modules for rapid deployment.
- Optional features incl. flooring, handrails, fencing, steps for access.
- Patent pending



Temporary base with Fencing
& ATS1301 Lattice Tower

FLI structures

Kentledge Foundations can be configured to support the tower, cabinets, generators, and other site equipment, all within the footprint of the base. Layouts are adaptable to suit each site, access and load requirements, ensuring a neat, tidy, safe and efficient setup every time. Patent pending.



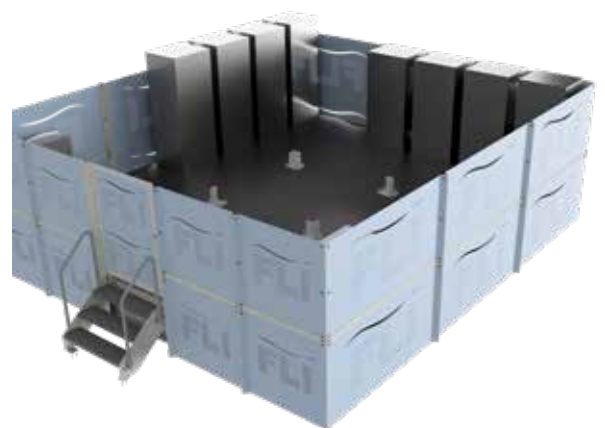
Temporary Base with
Electrical Generator



Temporary Base with
Antenna Cabinets



Temporary Base
with Handrailing



Temporary Base with
Fencing



Kentledge Foundations – What You Need to Know

Kentledge foundations are a fast, non-intrusive solution for temporary towers on firm, level ground. Ideal for short and medium-term projects, especially where ground disturbance isn't permitted, such as sites with buried utilities, contamination, or archaeological sensitivity. Patent pending.

Deployment & Suitability

- Quick to deploy with minimal prep. No piling, wet trades, or specialist equipment needed.
- Perfect for restricted access or tight timelines.

Reusability & Modularity

- Modular and reusable, ideal for redeployment across temporary works or events.

Visually Clean & Tidy

- A more professional and polished look compared to typical temporary foundations – ideal for event sites or public-facing locations.

Site Requirements

- Requires firm, level ground. Not suitable for soft, sloped, or waterlogged sites.
- Footprint: 6m x 6m – check site space before planning.

If you're unsure about ground conditions or whether a Kentledge solution is the right fit for your site, we also offer alternative foundation solutions, such as screw piles, and would be happy to talk you through the best option.