



Shared Rural Network

T3B Lattice Slimline Tower

ATS 1300 Heavy Duty Tower

SLP4 Slimline Parallel Tower

Tree Masts

Foundation Options

Sales@fli.co.uk

01452 722200





T3B Slimline Lattice Tower

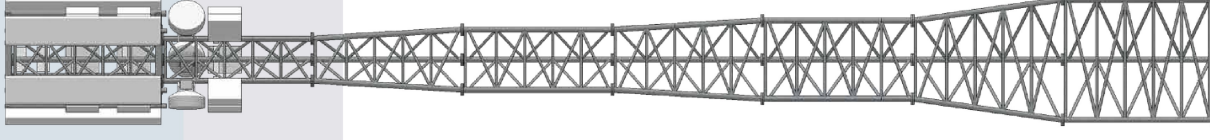
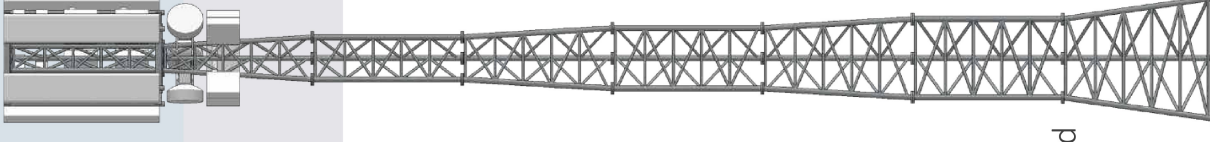
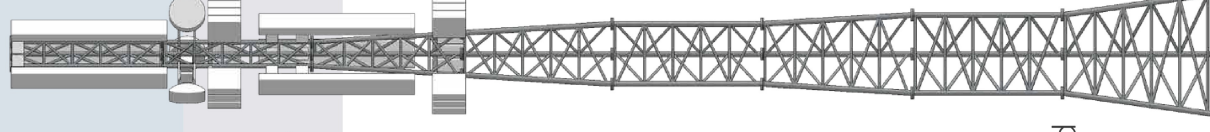
Slim tube tower, developed specifically for the Shared Rural Network project.

Designed for installation in the most remote sites and sensitive environments.

Flexibility to insert parallel sections in between tapered sections to suit loading for maximum efficiency and ease of antenna mounting.

Heights to 30m, modules in 2.5m increments.
400mm face width on top modules.

Hand build possible, with no crane or off-loading equipment.
No trackway, no helicopter.





Sales@fli.co.uk

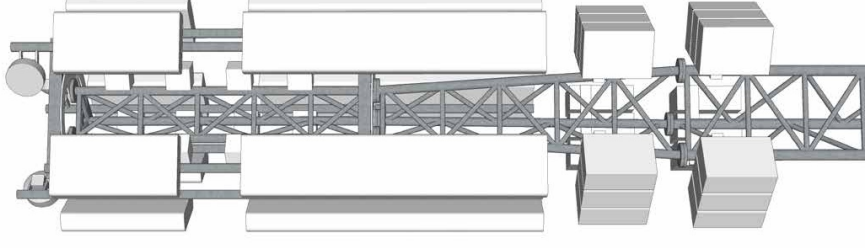
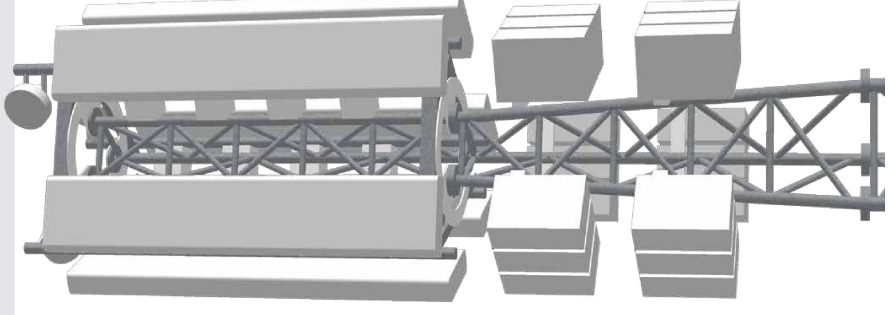
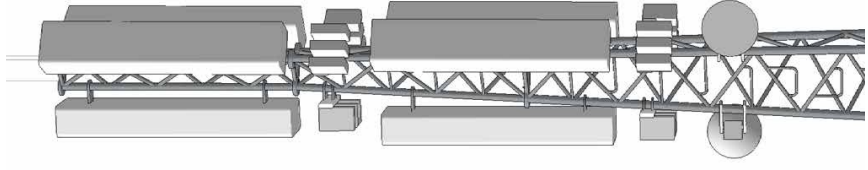
01452 722200

T3B Headframe Options

Headframe options for SRN loadings and multiple users.

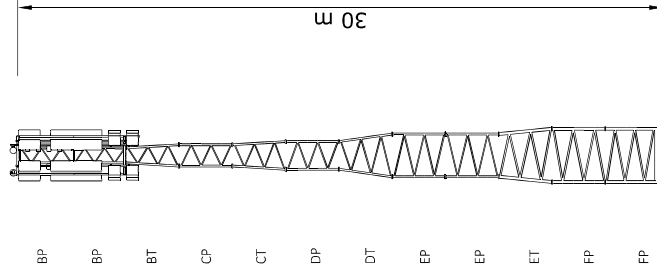
Ultra slim profile.

Integrated ladder with climbing access to the top.

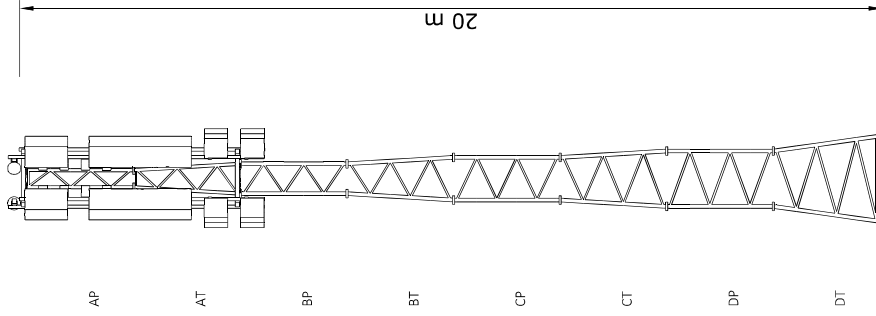


T3B Planning Drawings

T3B 5G Loading Medium Wind Speed Altitude: 100m

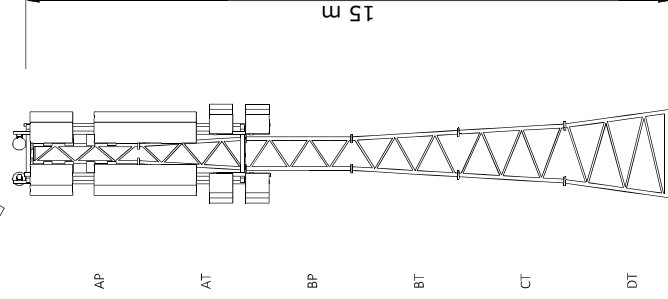
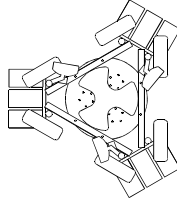


30m T3B Medium Tower
Wind Speed: 26m/s (Hourly Mean)
Min Foundation size: 5.1x5.1x1.2m
Face Width Top: 0.7m
Face Width Base: 2.5 m
Moment: 1021kNm Shear: 52kN
Dead Load: 79kN
Scale: 1:200 on A3



20m T3B Medium Tower
Wind Speed: 28m/s (Hourly Mean)
Min Foundation size: 4.1x4.1x1.2m
Face Width Top: 0.4m
Face Width Base: 2.0m
Moment: 500kNm Shear: 34kN
Dead Load: 36kN
Scale: 1:100 on A3

400mm Compact 2 pole Headframe Scale: 1:50 on A3



15m T3B Medium Tower
Wind Speed: TBC
Min Foundation size: 3.5x3.5x1.2m
Face Width Top: 0.4m
Face Width Base: 2.0m
Moment: 312kNm Shear: 28kN
Dead Load: 26kN
Scale: 1:100 on A3

DO NOT SCALE
IF IN DOUBT ASK

THE COPYRIGHT OF DESIGN, DETAIL, STANDARD PROPOSALS AND SPECIFICATIONS IS RESERVED BY FLI STRUCTURES. NO PARTS OF THIS DRAWING OR ANY INFORMATION CONTAINED HEREIN IS TO BE REPRODUCED, COPIED OR CONVEYED TO THIRD PARTIES WITHOUT THE WRITTEN PERMISSION IN WRITING. UNREGISTERED DESIGN COPYRIGHT FRANCES & LEWIS INTERNATIONAL LTD.

UNLESS OTHERWISE SPECIFIED:
DIMENSIONS ARE IN MILLIMETRES UNLESS OTHERWISE STATED.
DIMENSIONS IN BRACKETS ARE FOR GUIDANCE ONLY. FOR INSTALLATION INSTRUCTIONS REFER TO THE RELEVANT METHODS STATEMENT.
BOLTS SHALL BE MADE "TIGHT TIGHT" BEING THAT THE TENSION SHALL BE IN EXCESS OF ONE MINUS USUAL NORMAL SIZE TOLERANCE.

Loading - Standard and Alternative
Antenna/Feeder Compliment:

- 6No. Antenna 2.4m tall
- 18No. BRUS
- 12No. LDF5-550 Feeders
- 6No. Fibre cables
- 3No. 300mm Dishes
- 9No. BOBs
- 6No. Massive MIMOs 1m tall

Typical Equipment Layout

NO.	ISSUE DATE	ISSUE NO.	DESCRIPTION	ISSUED BY
1	16/07/21	1687	5G/50C	FLI

FRANCES & LEWIS INTERNATIONAL LTD
TEL: +44 (0) 1452 722000 WEB: WWW.FLILTD.CO.UK

DATE: 16/07/21 SCALE: A3
DWN: [] CDD: [] F3/REP: []
FABRICATED ASBY: [] APPD: []

CUSTOMER: []
ORDER NO: []
T3B Tower with 5G loading, for Medium level wind speed.

DRG No: [] REV: A

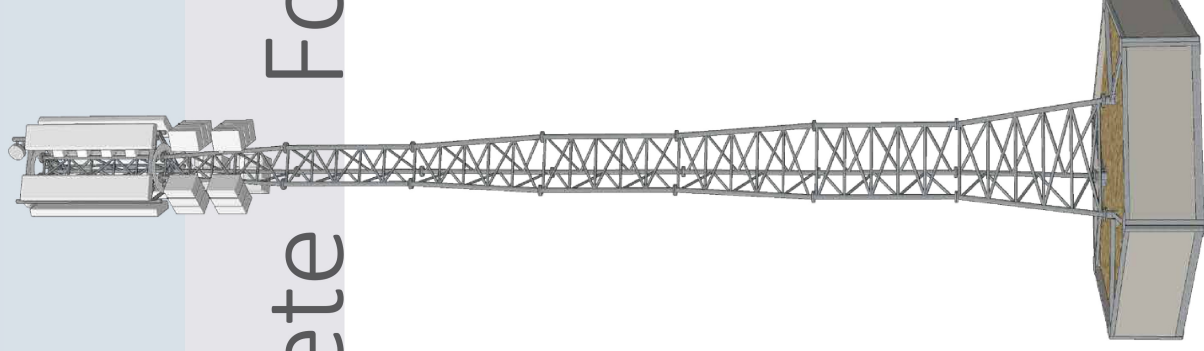
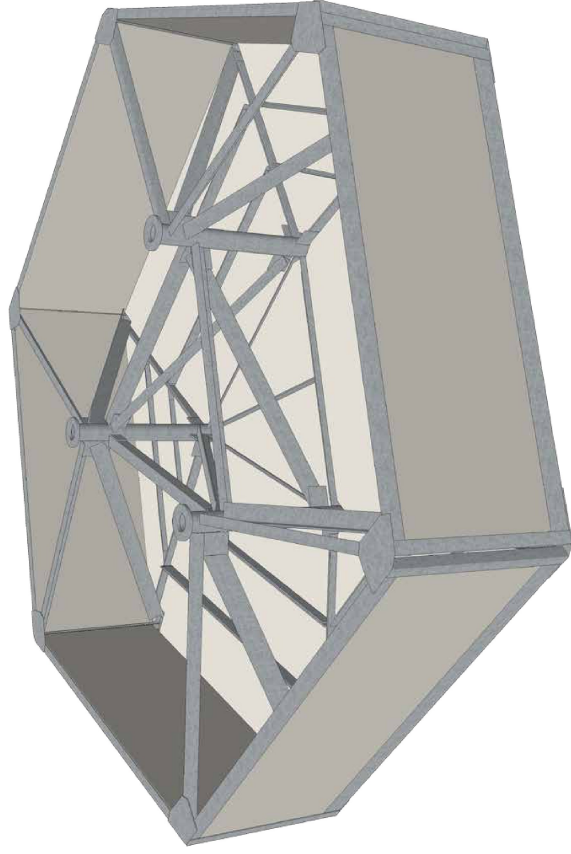
Sales@fli.co.uk

01452 722200

FLI structures

Hand-Install Complete

Foundation



SRN grillages developed alongside towers for installation in the most remote sites and sensitive environments.

Both grillage and tower can be completely installed by hand.

No concrete / wet trades.

No crane or mechanical off-loading.

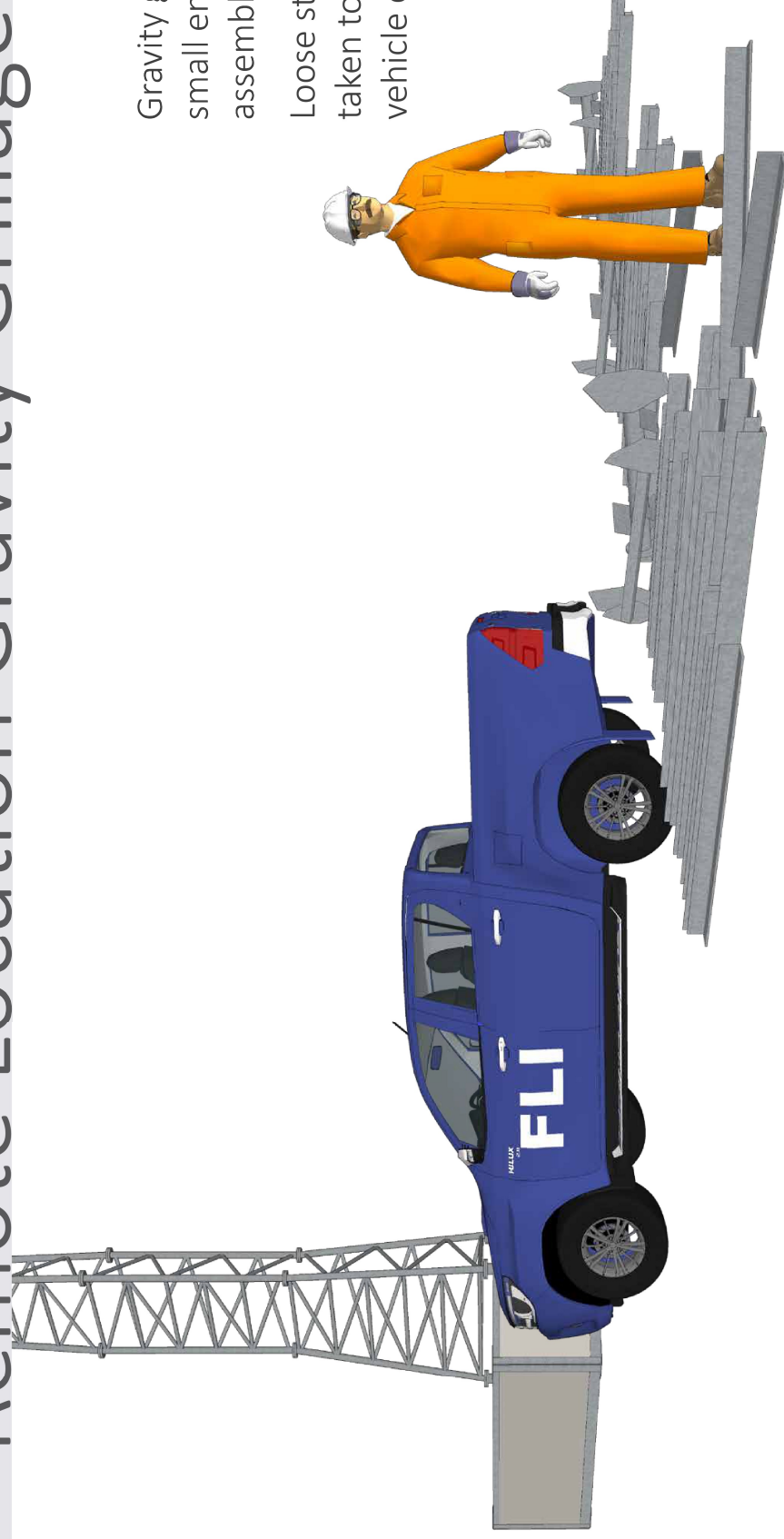
No trackway.

FLI structures

Sales@fli.co.uk

01452 722200

Remote Location Gravity Grillage



Gravity grillage with all components small enough to be unloaded and assembled by hand.

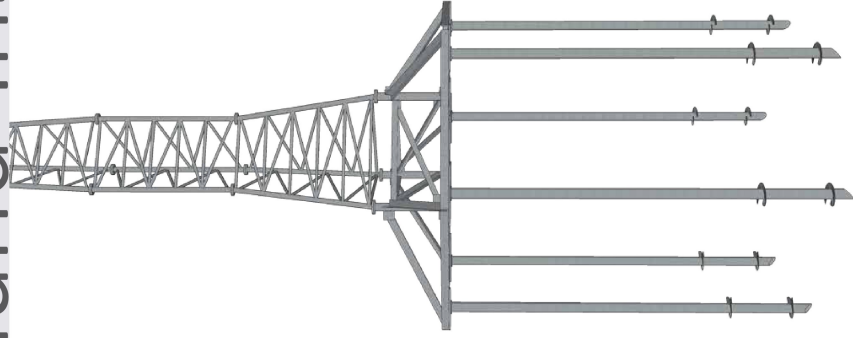
Loose stone ballast which can be taken to site by any agricultural vehicle or pick up if necessary.

Sales@fli.co.uk

01452 722200

FLI structures

Hand-Install Screw Pile Grillage



Screw pile grillage that can be assembled without lifting equipment. Particularly suited to soft ground or environmentally sensitive sites. Minimal ground disturbance. Can be completely and quickly removed and recycled at the end of life, without major removal of concrete or leaving it on site, alleviating planning concerns.