

HELICAL PILE FRAME ASSEMBLY HPF226

ITEM	Drg No.	PART No.	DESCRIPTION	Wt (kg)	QTY
1	HE 1481	HE 1481	HELICAL PILE ARM TO SUIT 20m STREETWORKS MONOPOLE	117.8	3
2	CP2286	CP2286	TOP CONNECTION PLATE (20mm THICK PLATE)	132.0	1
3	CP2287	CP2287	BOTTOM CONNECTION PLATE (20mm THICK PLATE)	133.8	1
4	HE 1479	HE 1479	THRUST WASHER (30mm PLATE)	11.2	3
5	-----	-----	M20x80 B-N-FW	0.4	33
6	-----	-----	M30x240 LG STUDDING cw 4N-4FW	2.9	12
7	-----	SPARE	M20x80 B-N-FW	0.3	2

DO NOT SCALE
IF IN DOUBT ASK

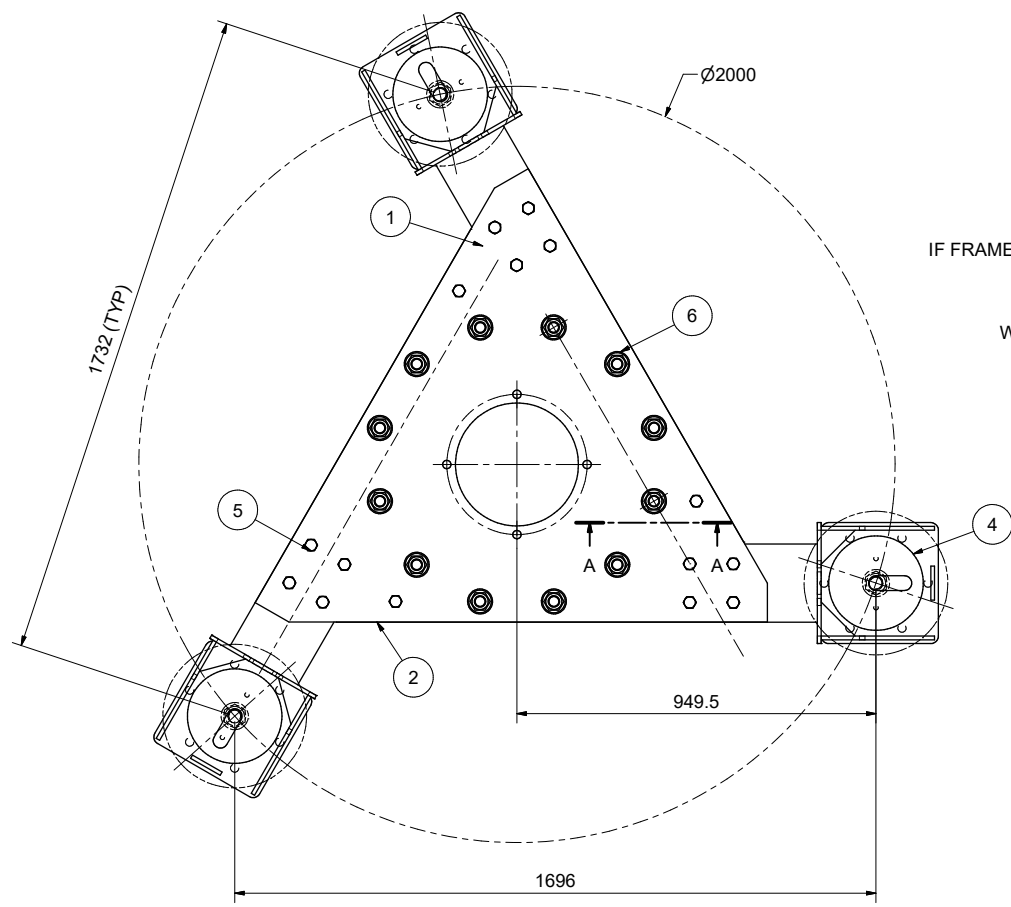
THE COPYRIGHT OF DESIGN, DETAILS AND MATERIALS CONTAINED OR IMPLIED IN THIS DRAWING ARE RESERVED BY FRANCIS & LEWIS INTERNATIONAL LTD. NO PART OF THIS DRAWING OR ANY DETAIL HEREIN IS TO BE REPRODUCED OR TRANSMITTED IN ANY FORM OR BY ANY MEANS, ELECTRONIC OR MECHANICAL, INCLUDING PHOTOCOPYING, RECORDING, OR BY ANY INFORMATION STORAGE AND RETRIEVAL SYSTEM, WITHOUT THE WRITTEN PERMISSION OF FRANCIS & LEWIS INTERNATIONAL LTD.

ALL WELDS TO BE CONTINUOUS
I.E. "PICKLE FREE"

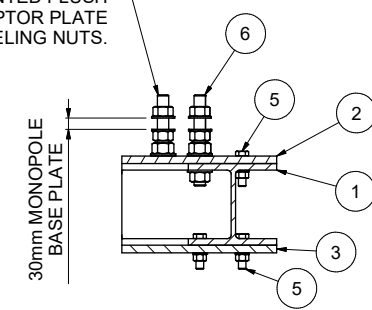
REMOVE ALL SHARP EDGES AND BURRS

ENSURE ALL HARD STAMP CHARACTERS ARE VISIBLE AFTER GALVANIZATION

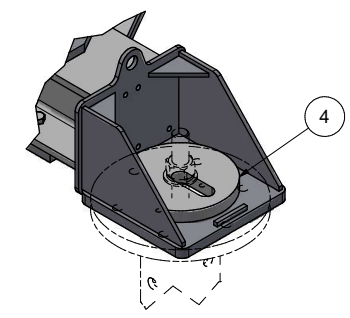
UNLESS OTHERWISE STATED:-
MATERIAL:- GRADE AS PER FLI LTD FORM 1 LG
FINISH:- GALVANIZED TO BS EN ISO 1461
DIMENSIONS:- MILLIMETRES (mm)
WELD INSP:- AS PER LATEST EDITION ANNEX B
TOLERANCES:-
CUT LENGTHS = ± 3 mm
HOLE CENTRES = ± 2 mm
ANGULAR CUT = $\pm 0.25^\circ$
FABRICATED ASSY = ± 3 mm
PCD = ± 1 mm



IF FRAME IS SUFFICIENTLY LEVEL,
POLE BASE PLATE CAN
BE MOUNTED FLUSH
TO THE ADAPTOR PLATE
WITHOUT LEVELING NUTS.

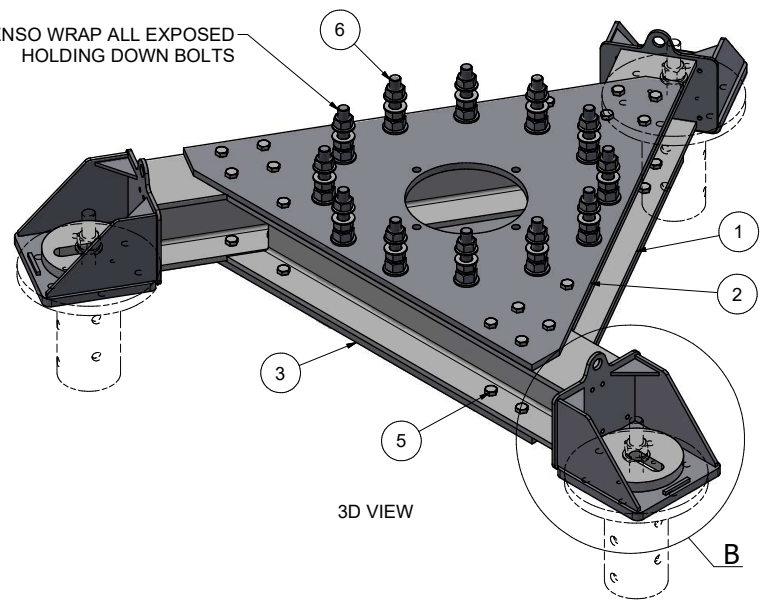


SECTION A-A
ADAPTOR PLATE BOLT DETAIL

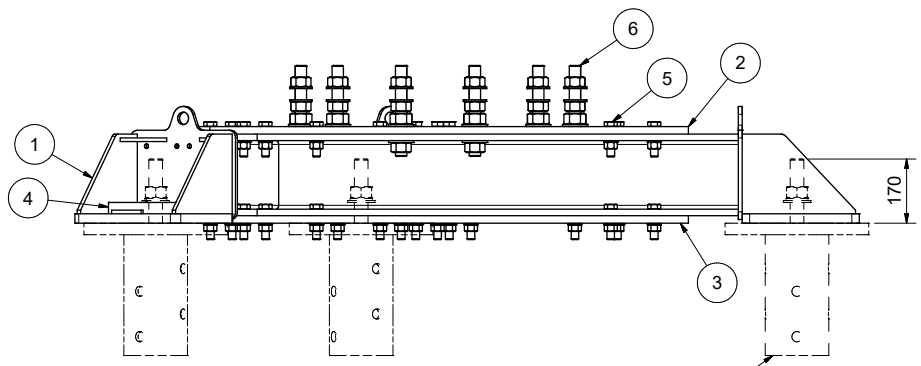


DETAIL B
TYPICAL HELICAL PILE CAP PLATE
TO FRAMEWORK FIXING DETAILS

DENSO WRAP ALL EXPOSED
HOLDING DOWN BOLTS



3D VIEW



PILE CAP & STUDDING SHOWN
FOR REFERENCE ONLY

FOR CE MARK & EXECUTION CLASS REFER TO RELEVANT DHP
NON FIRE RATED BOLTING ASSEMBLIES TO BS EN 1993-1-7

- NOTES:-
1. ALL DRAWING NOTES ARE FOR GUIDANCE ONLY. FOR INSTALLATION INSTRUCTIONS REFER TO THE RELEVANT METHOD STATEMENT.
 2. BOLTS SHALL BE MADE "SNUG TIGHT" BEING THAT TIGHTNESS ACHIEVABLE BY THE EFFORT OF ONE MAN USING A NORMAL SIZE SPANNER.

REV	DATE	BY	CHKD	DESCRIPTION
A	13/06/2022	JL	AS	FIRST ISSUE
B				MODIFICATION



DATE:	07/06/2022	SCALE:	NTS	FLI Ref:	2000/121
DESIGNER:	JL	CHKD:	AS	ENCL:	HN
CUSTOMER:	STANDARD PRODUCT				
ORDER NO.:	N/A				
TITLE:	HELICAL PILE FRAME ASSEMBLY TO SUIT 20m APOLLO STREETWORKS MONOPOLE (3No. PILES ON A 2.0m PCD)				