

HELICAL PILE FRAMEWORK - ASSEMBLY No. HPF268

ITEM	Drg No.	PART No.	DESCRIPTION	Wt (kg)	QTY
1	SB2654	SB2654	BEAM SUPPORT BEAM (457x191x98 UB)	349.1	4
2	SB2655	SB2655	MAIN SUPPORT BEAM (457x191x98 UB)	710.7	1
3	SB2656	SB2656	SUPPORT BEAM (457x191x98 UB)	335.4	2
4	BS204	BS204	BASE STUB (150x150x15 RSA - WELDED ASSEMBLY)	29.6	4
5	CP2162	CP2162	CONNECTION PLATE (40mm THICK PLATE)	21.2	4
6	SA948	SA948	SUPPORT ANGLE (70x70x6 RSA - 1.91m O/ALL)	17.0	3
7	LF1257	LF1257	3 RUNG LADDER FOOT (WELDED ASSEMBLY)	18.2	1
8	HE1479	HE1479	THRUST WASHER (30mm PLATE)	11.2	8
9	SP482-SP484	SP482	SHIM PLATE TO SUIT Ø193.7 CHS (10mm PLATE)	3.8	8
10	SP482-SP484	SP483	SHIM PLATE TO SUIT Ø193.7 CHS (6mm PLATE)	2.3	8
11	SP482-SP484	SP484	SHIM PLATE TO SUIT Ø193.7 CHS (2mm PLATE)	0.8	8
12	-----	-----	M30x700 STUDDING c/w 4N-2FW	5.1	16
13	-----	-----	M30x100 B-N-FW	1.2	48
14	-----	-----	M16x60 B-N-FW	0.2	8
15	-----	SPARE	M30x100 B-N-FW	0.9	2
16	-----	SPARE	M16x60 B-N-FW	0.2	1

DO NOT SCALE IF IN DOUBT ASK

THE COPYRIGHT OF DESIGN, DETAILS AND PROPOSALS CONTAINED OR IMPLIED IN THIS DRAWING ARE VESTED IN FRANCIS & LEWIS INTERNATIONAL LTD & MUST NOT BE REPRODUCED, COPIED OR CONVEYED TO THIRD PARTIES WITHOUT THEIR PERMISSION IN WRITING. UNREGISTERED DESIGN RIGHTS APPLY. COPYRIGHT FRANCIS & LEWIS INTERNATIONAL LTD.

ALL WELDS TO BE CONTINUOUS I.E. "PICKLE FREE" **REMOVE ALL SHARP EDGES AND BURRS**

ENSURE ALL HARD STAMP CHARACTERS ARE VISIBLE AFTER GALVANISATION

UNLESS OTHERWISE STATED:-
MATERIAL:- GRADE AS PER FLI LTD FORM 11G
FINISH:- GALVANISED TO BS EN ISO 1461
DIMENSIONS:- MILLIMETRES (mm)
WELD INSP:- AS PER NISS LATEST EDITION ANNEX 'B'
TOLERANCES:-
CUT LENGTHS = ±2mm
HOLE CENTRES = ±2mm
ANGULAR CUT = ±0.25°
FABRICATED ASSY = ±3mm
PCD = ±1mm

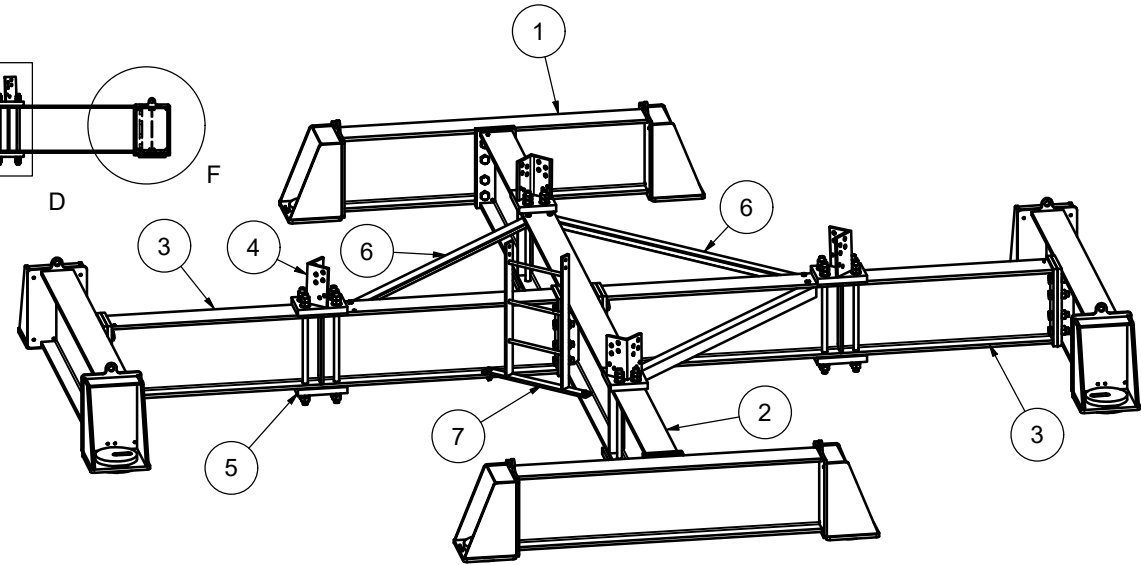
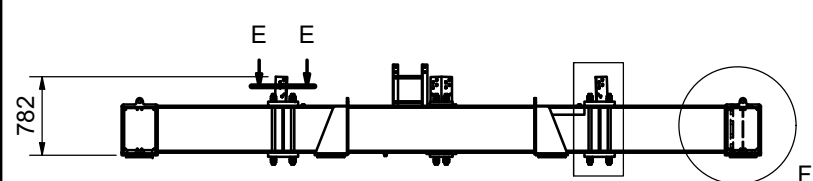
FOR CE MARK & EXECUTION CLASS REFER TO RELEVANT DoP
NON PRELOADED BOLTING ASSEMBLIES TO BS EN 15048-1

NOTES:-

1. ALL DRAWING NOTES ARE FOR GUIDANCE ONLY. FOR INSTALLATION INSTRUCTIONS REFER TO THE RELEVANT METHOD STATEMENT.

2. BOLTS SHALL BE MADE "SNUG TIGHT" BEING THAT TIGHTNESS ACHIEVABLE BY THE EFFORT OF ONE PERSON USING A NORMAL SIZE SPANNER. A 2nd TIGHTNESS CHECK IS TO BE PERFORMED AFTER A MINIMUM OF 1 HOUR.

3. SPACERS/PACKERS TO AID WITH LEVELLING OF THE FRAME ON SITE. THE COMBINATION IS TO BE DETERMINED BY THE CUSTOMER TO SUIT.



3D VIEW

SHEET 1 OF 2

A	27/09/2024	FIRST ISSUE	RMV	RLC
ISSUE	DATE	MODIFICATION	DSN/S	CHKD



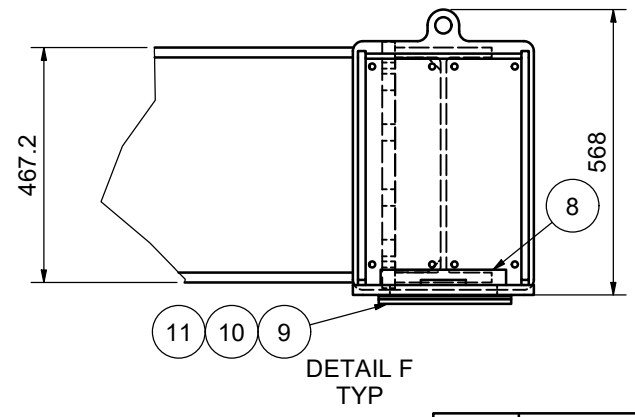
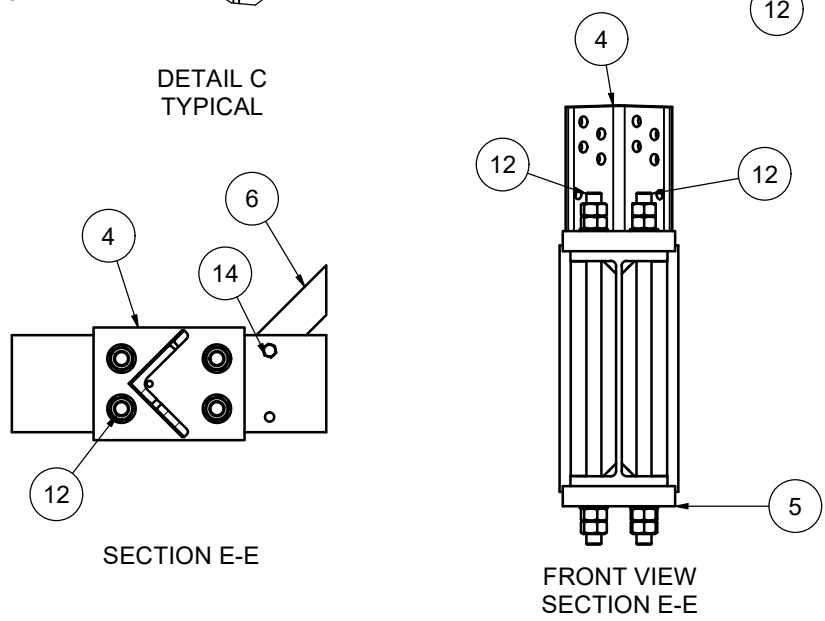
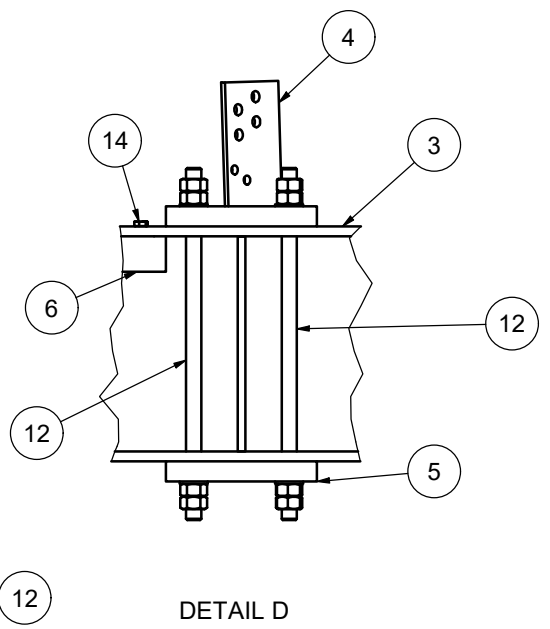
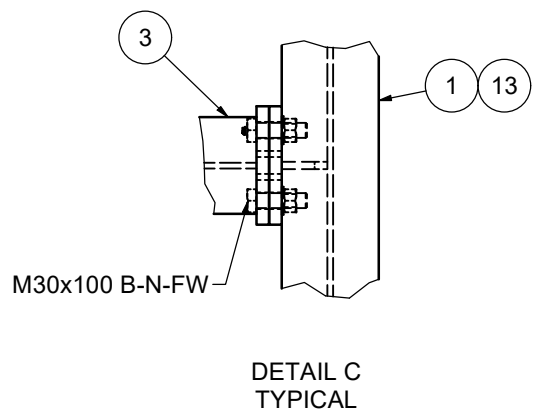
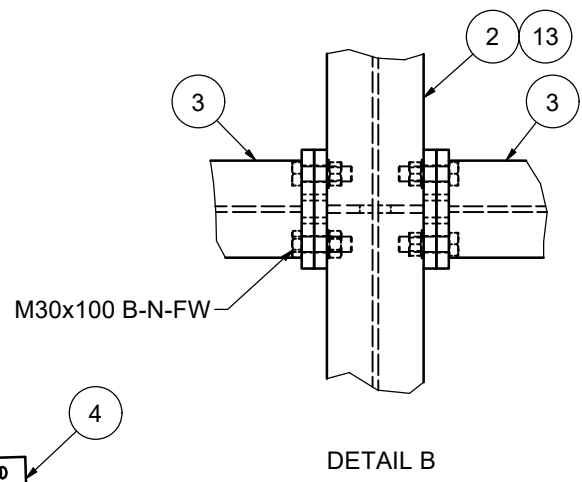
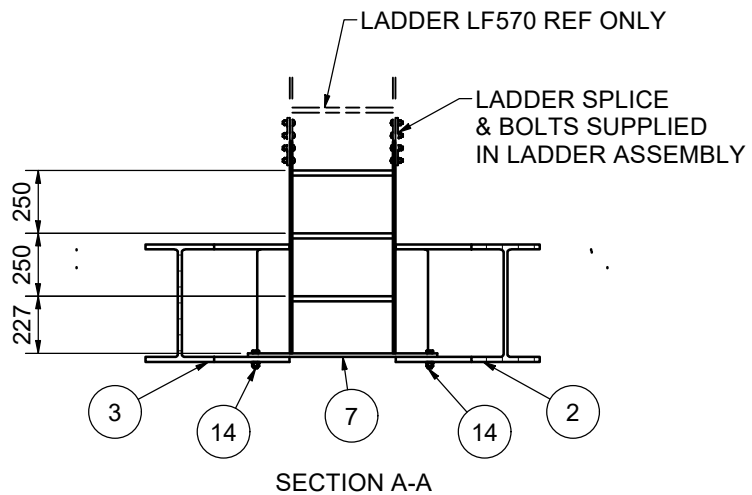
DATE: 25/09/2024	SCALE: NTS	Flt Ref: 2300/215B
DESIGNER: RMorales	DRG. CHECK: RLC	ENG. APPROV: HH

CUSTOMER: **STANDARD PRODUCT**

ORDER No. N/A

TITLE: **HAMMERHEAD PILE FRAME TO SUIT ATS1300 BASE MODULE E**

TOTAL WEIGHT	3336.6 kg	DRG No.	HPF268	Rev. A
--------------	------------------	---------	---------------	---------------



<small>THE COPYRIGHT OF DESIGN, DETAILS AND PROPOSALS CONTAINED OR IMPLIED IN THIS DRAWING ARE VESTED IN FRANCIS & LEWIS INTERNATIONAL LTD & MUST NOT BE REPRODUCED, COPIED OR CONVEYED TO THIRD PARTIES WITHOUT THEIR PERMISSION IN WRITING. UNREGISTERED DESIGN RIGHTS APPLY. COPYRIGHT FRANCIS & LEWIS INTERNATIONAL LTD.</small>			
<small>ALL WELDS TO BE CONTINUOUS I.E. "PICKLE FREE"</small>		<small>REMOVE ALL SHARP EDGES AND BURRS</small>	
<small>ENSURE ALL HARD STAMP CHARACTERS ARE VISIBLE AFTER GALVANISATION</small>			
<small>UNLESS OTHERWISE STATED:- MATERIAL:- GRADE AS PER FLI LTD FORM 11G FINISH:- GALVANISED TO BS EN ISO 1461 DIMENSIONS:- MILLIMETRES (mm) WELD INSP:- AS PER NISS LATEST EDITION ANNEX 'B' TOLERANCES:- CUT LENGTHS = ±2mm HOLE CENTRES = ±2mm ANGULAR CUT = ±0.25° FABRICATED ASSY = ±3mm PCD = ±1mm</small>			
<small>FOR CE MARK & EXECUTION CLASS REFER TO RELEVANT DoP</small>			
<small>NON PRELOADED BOLTING ASSEMBLIES TO BS EN 15048-1</small>			
NOTES:-			
SHEET 2 OF 2			
<small>FRANCIS & LEWIS INTERNATIONAL LTD TEL: +44 (0)1452 722200 WEB: www.fl.co.uk</small>			
DATE:	25/09/2024	SCALE:	NTS
DRG. NO.:	RMorales	DRG. CHECK:	RLC
ENG.:		APPD:	HH
CUSTOMER:	STANDARD PRODUCT		
ORDER No.:	N/A		
TITLE:	HAMMERHEAD PILE FRAME TO SUIT ATS1300 BASE MODULE E		
TOTAL WEIGHT:	3336.6 kg	DRG. No.:	HPF268
			A