

ASSEMBLY No. HPF269

ITEM	Drg No.	PART No.	DESCRIPTION	Wt (kg)	QTY
1	SB2668	SB2668	BEAM SUPPORT BEAM (457x191x98 UB)	328.3	4
2	SB2655	SB2655	MAIN SUPPORT BEAM (457x191x98 UB)	723.9	1
3	SB2656	SB2656	SUPPORT BEAM (457x191x98 UB)	341.6	2
4	BS254	BS254	BASE STUB (150x150x18 RSA)	36.8	4
5	CP2632	CP2632	CONNECTION PLATE (40mm PLATE)	25.0	4
6	SA948	SA948	SUPPORT ANGLE (70x70x8 RSA)	17.0	3
7	LS521	LS521	LADDER STEP (2 RUNG)	10.7	1
8	HE1479	HE1479	THRUST WASHER (30mm PLATE)	11.2	8
9	SP482-SP484	SP482	SHIM PLATE TO SUIT Ø193.7 CHS (10mm PLATE)	3.8	8
10	SP482-SP484	SP483	SHIM PLATE TO SUIT Ø193.7 CHS (6mm PLATE)	2.3	8
11	SP482-SP484	SP484	SHIM PLATE TO SUIT Ø193.7 CHS (2mm PLATE)	0.8	8
12	131-625	EL3	EARTH LUG (40x6 FLAT)	0.3	4
13	-----	-----	M30x700 STUDDING c/w 4N-2FW	5.1	16
14	-----	-----	M30x100 B-N-FW	1.2	48
15	-----	-----	M16x60 B-N-FW	0.2	12
16	-----	SPARE	M30x100 B-N-FW	0.9	3
17	-----	SPARE	M16x60 B-N-FW	0.2	1

RELEVANT LADDER FOOT TO BE ISSUED ALONGSIDE PILEFRAME

LADDER FOOT DETAIL
 FOR MODULE E - USE LF1498
 FOR MODULE F - USE LF1497
 FOR MODULE G - USE LF1496

DO NOT SCALE
IF IN DOUBT ASK

THE COPYRIGHT OF DESIGN, DETAIL AND PROCEDURE CONTAINED ON SHEETS OF THIS DRAWING ARE RESERVED BY FRANCIS & LEWIS INTERNATIONAL LTD. IN WELSH AND VERTICAL. UNAUTHORIZED REPRODUCTION WITHOUT WRITTEN PERMISSION IS STRICTLY PROHIBITED. THIS DRAWING IS A CONTROLLED DOCUMENT.

ALL WELDS TO BE CONTINUOUS "TICKLE FREE" REMOVE ALL SHARP EDGES AND BURRS

ENSURE ALL HARD STAMP CHARACTERS ARE VISIBLE AFTER GALVANIZATION

UNLESS OTHERWISE STATED:-
 MATERIALS - GRADE AS PER FLI LTD FORM 110
 FINISH - GALVANIZED TO BS EN ISO 1461
 DIMENSIONS - MILLIMETRES (mm)
 WELD INSP. - AS PER LATEST EDITION ANNEX B
 CUT LENGTHS = ±2mm
 HOLE CENTRES = ±2mm
 ANGULAR CUT = ±0.25°
 FABRICATED ASSY = ±3mm
 PCN = ±0.1mm

FOR CE MARK & EXECUTION CLASSES REFER TO RELEVANT DCP
 NON PRE-LOADING BOLTING ASSEMBLIES TO BS EN 12048-2

NOTES:-
 1. ALL DRAWING NOTES ARE FOR GUIDANCE ONLY. FOR INSTALLATION INSTRUCTIONS REFER TO THE RELEVANT METHOD STATEMENT.
 2. BOLTS SHALL BE MADE "SNUG TIGHT" BEING THAT TIGHTNESS ACHIEVABLE BY THE EFFORT OF ONE PERSON USING A NORMAL SIZE SPANNER. A 2nd TIGHTNESS CHECK IS TO BE PERFORMED AFTER A MINIMUM OF 1 HOUR.

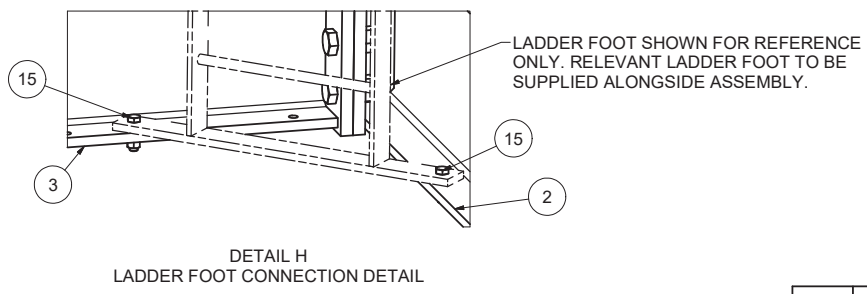
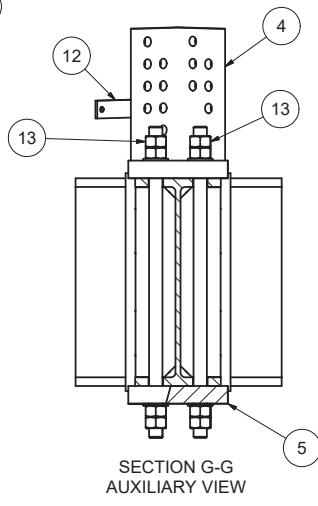
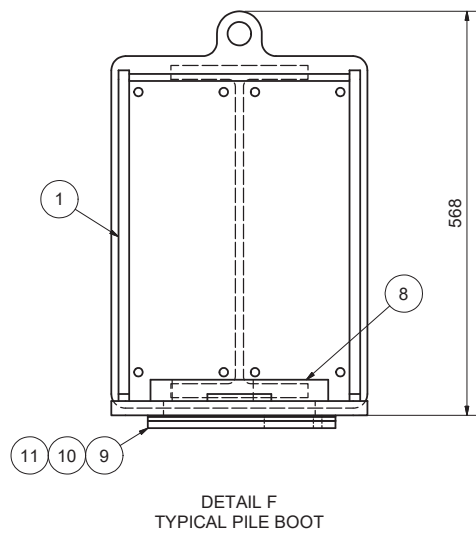
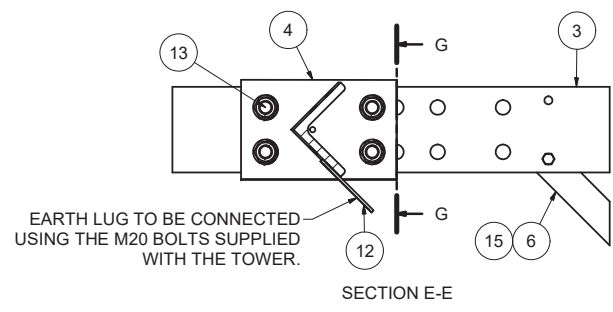
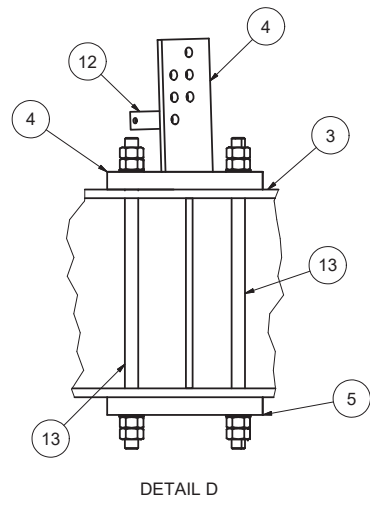
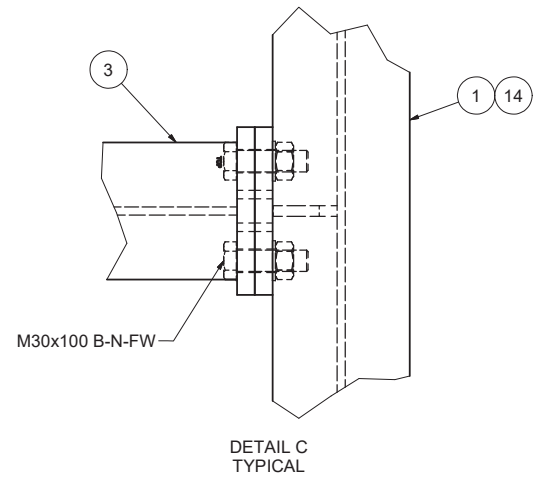
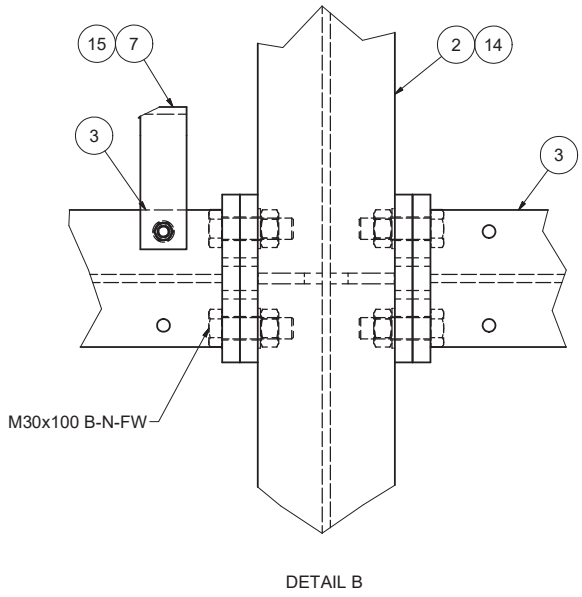
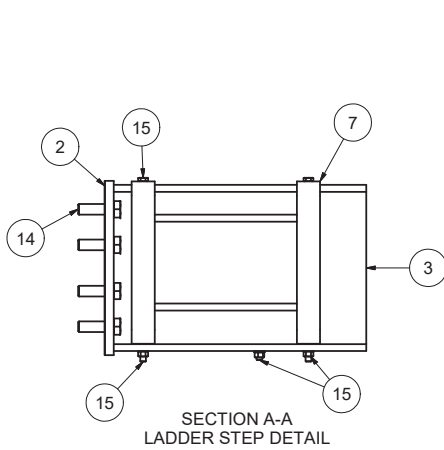
SHEET 1 OF 2

REV	DATE	DESCRIPTION	BY	CHK
1	26/11/2024	ISSUE FOR FABRICATION



DATE	26/11/2024	SCALE	N/A	CLASS	N/A
DESIGNER	LH	DES. CHECK	JHN	QC	HR
PRODUCT	STANDARD PRODUCT				
VERSION	N/A				

TITLE: HAMMERHEAD PILE FRAME TO SUIT ATS1301 BASE MODULES E, F & G



DO NOT SCALE
IF IN DOUBT ASK

ALL WELDS TO BE CONTINUOUS
I.E. "PICKLE FREE"

REMOVE ALL SHARP
EDGES AND BURRS

ENSURE ALL HARD STAMP CHARACTERS
ARE VISIBLE AFTER GALVANISATION

UNLESS OTHERWISE STATED:-
MATERIALS:- GRADE AS PER FLI LTD FORM 110
FINISH:- GALVANISED TO BS EN ISO 1461
DIMENSIONS:- MILLIMETRES (MM)
WELD INSPECTION:- AS PER ISSS LATEST EDITION ANNEX 'B'
TOLERANCES:-
CUT LENGTHS = ±2mm
HOLE CENTRES = ±2mm
ANGULAR CUT = ±0.25°
FABRICATED ASSY = ±3mm
PCB = ±0.0mm

FOR CE MARK & EXECUTION CLASS REFER TO RELEVANT DCP
NON PRE-LOADING ASSEMBLIES TO BS EN 12068-1

NOTES:-

SHEET 2 OF 2

#	REVISION	MODIFIED FROM PREVIOUS EDITION	DATE	BY
1	01/10/2018	DESIGN & DRAWING	13/11/2018	HR
2	01/10/2018	DESIGN & DRAWING	13/11/2018	HR



DATE:	26/11/2024	SCALE:	NTS	FORM:	N/A
DESIGNER:	LH	DESIGN CHECK:	JHN	DATE:	HR
DESCRIPTION:	STANDARD PRODUCT				
ISSUED BY:	N/A				

TITLE
HAMMERHEAD PILE FRAME TO SUIT
ATS1301 BASE MODULES E, F & G

TOTAL WEIGHT 3318.1 kg DRO.No. HPF269 Rev. B