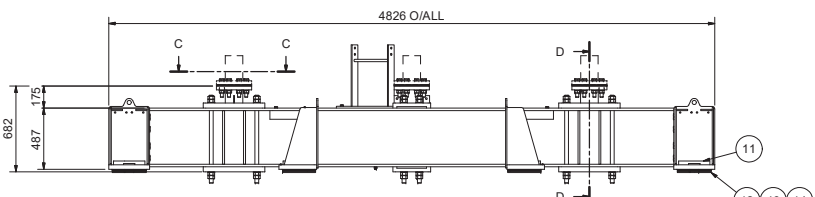
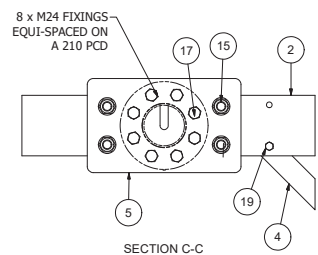


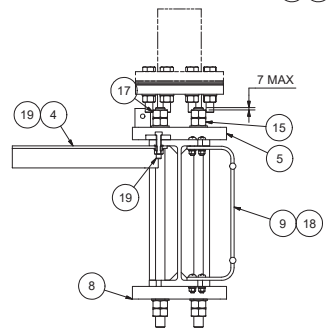
PLAN



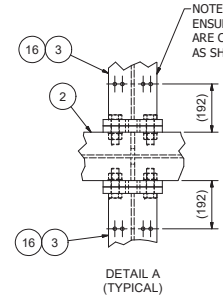
ELEVATION



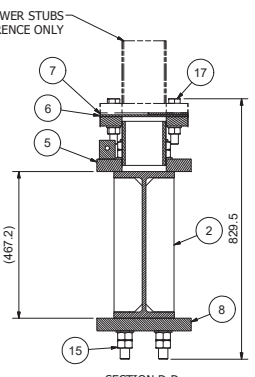
SECTION C-C



SIDE VIEW ON SECTION C-C

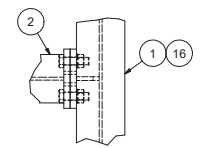


DETAIL A (TYPICAL)

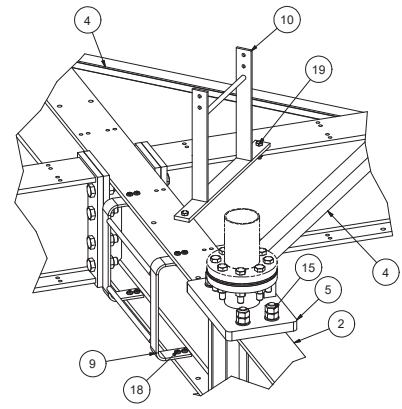


SECTION D-D

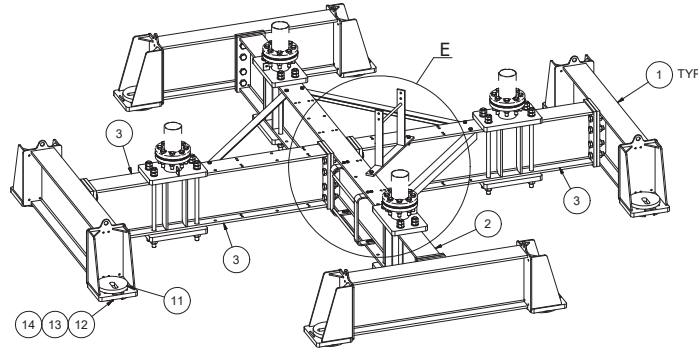
CSSS SWANN TOWER STUBS SHOWN FOR REFERENCE ONLY



DETAIL B (TYPICAL)



DETAIL E



3D VIEW

ASSEMBLY No. HPF270					
ITEM	Drq No.	PART No.	DESCRIPTION	Wt (kg)	QTY
1	SB2669	SB2669	BOOTS BEAM (457x191x98 UB)	276.3	4
2	SB2670	SB2670	MAIN BEAM (457x191x98 UB)	572.7	1
3	SB2671	SB2671	BEAM (457x191x98 UB)	266.3	2
4	SA853	SA853	BRACE (70x70x8 RSA)	13.2	3
5	BS255	BS255	BASE STUB (Ø139.7x10.0 CHS)	57.8	4
6	BL67	BL67	BLANKING FLANGE (6mm PLATE)	2.9	4
7	DF89	DF89	DRAINAGE FLANGE (6mm PLATE)	2.7	4
8	CP2630	CP2630	CLAMP PLATE (40mm PLATE)	47.7	4
9	LS518	LS518	LADDER SECTION (2 RUNGS)	9.8	1
10	LF1480	LF1480	LADDER FOOT (1 RUNG)	12.3	1
11	HE1479	HE1479	THRUST WASHER (30mm PLATE)	11.2	8
12	SP482-SP484	SP482	SHIM PLATE TO SUIT Ø193.7 CHS (10mm PLATE)	3.8	8
13	SP482-SP484	SP483	SHIM PLATE TO SUIT Ø193.7 CHS (6mm PLATE)	2.3	16
14	SP482-SP484	SP484	SHIM PLATE TO SUIT Ø193.7 CHS (2mm PLATE)	0.8	16
15	-----	-----	M30x700 STUDDING c/w 4N-2FW	5.1	16
16	-----	-----	M30x100 B-N-FW	1.2	48
17	-----	-----	M24x130 B-N-FW	0.8	32
18	-----	-----	M12x50 C HD B-N-FW	0.1	8
19	-----	-----	M16x60 B-N-FW	0.2	8
20	-----	-----	SPARE M30x100 B-N-FW	0.9	3
21	-----	-----	SPARE M24x130 B-N-FW	0.9	2
22	-----	-----	SPARE M12x50 C HD B-N-FW	0.1	1
23	-----	-----	SPARE M16x60 B-N-FW	0.2	1

DO NOT SCALE
P IN QUOTE ASK

ALL DIMENSIONS TO BE CONFIRMED BY GENERAL ALLIANCE
IF "POLE FREE"
SEE TABLE 1 (IF APPLICABLE)
IF "POLE FREE"
SEE TABLE 1 (IF APPLICABLE)

GENERAL NOTES:
MATERIALS - GRADE AS PER ALLIANCE FROM LOG
PROVIDE ADVISORY TO BE BY THE
INSTALLATION INSTRUCTIONS
REFER TO THE RELEVANT
METHOD STATEMENT.

2. BOLTS SHALL BE MADE "SNUG
TIGHT" BEING THAT TIGHTNESS
ACHIEVABLE BY THE EFFORT OF
ONE MAN USING A NORMAL SIZE
SPANNER.

3. ENSURE ALL STUDDING TOP
THREAD LENGTH MAXIMUM 7mm,
TO AVOID CLASH WITH BRACING
BOLTS.

4. SPACERS/PACKERS TO AID
WITH LEVELLING OF THE FRAME
ON SITE. THE COMBINATION IS
TO BE DETERMINED BY THE
CUSTOMER TO SUIT.

SITE: FALKIRK MIDDLEFIELD

NO.	REV.	DATE	BY	CHKD.	APP'D.

FLI structures
FALKIRK & MIDLOTHIAN
TEL: 01259 450000 FAX: 01259 450001

DATE: 20110521
SCALE: N/A
PROJECT: STANDARD PRODUCT
DESCRIPTION: N/A
DRAWING: HAMMERHEAD PILE FRAME 4.5m PCD TO SUIT SWANN TOWER (CSSS)