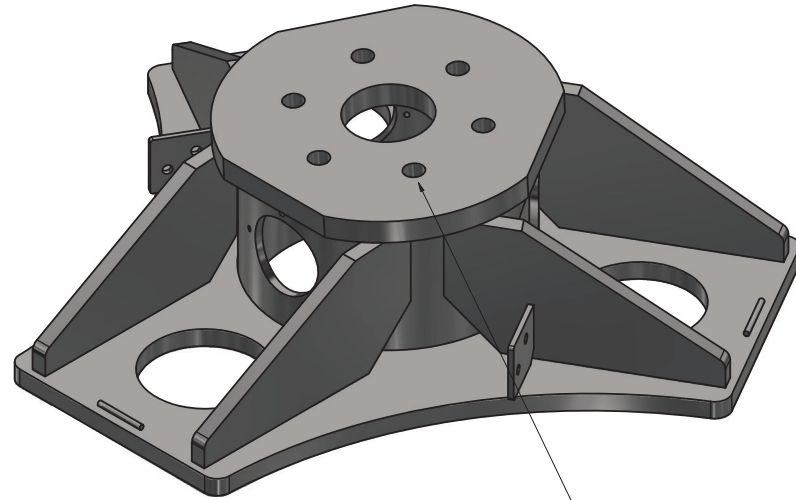
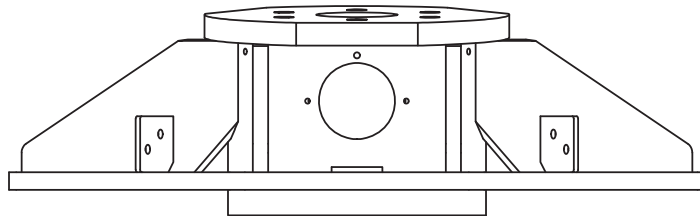


PLAN

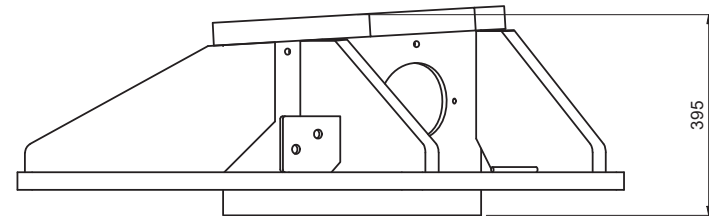


3D VIEW

FLANGE TO SUIT FLI T3A



ELEVATION



ELEVATION

ORIGINAL FRAME NUMBER	COMPATIBLE TOWER TYPES	FRAME CAPACITY			FRAME WEIGHT	MAXIMUM DEFLECTION
		TENSION	COMPRESSION	SHEAR		
HPF243	FLI T3A (UP TO 40m)	2100 kN	2200 kN	270 kN	2160 kg	N/A

DO NOT SCALE IF IN DOUBT ASK

THE COPYRIGHT OF DESIGN, DETAIL AND INSTITUTE CONTAINED OR IMPLIED IN THIS DRAWING AND STORED BY FRANCIS & LEWIS INTERNATIONAL LTD IS HEREBY NOT TO BE REPRODUCED OR TRANSMITTED IN ANY FORM OR BY ANY MEANS, ELECTRONIC OR MECHANICAL, INCLUDING PHOTOCOPYING, RECORDING, OR BY ANY INFORMATION STORAGE AND RETRIEVAL SYSTEM.

ALL WELDS TO BE CONTINUOUS I.E. "PICKLE FREE" REMOVE ALL SHARP EDGES AND BURRS

ENSURE ALL HARD STAMP CHARACTERS ARE VISIBLE AFTER GALVANISATION

UNLESS OTHERWISE STATED:-

MATERIAL:- GR506 AS PER FLI TO M0019

FINISH:- GALVANISED TO BS EN ISO 1461

DIMENSIONS:- MILLIMETRES (MM)

WELD INSP:- AS PER NISSI LATEST EDITION ANNEX 'B'

TOLERANCES:-

CUT LENGTHS = ± 2mm

HOLE CENTRES = ± 2mm

ANGULAR CUT = ± 0.2°

FABRICATED ASSY = ± 3mm

PCD = ± 0.1mm

FOR CE MARK & EXECUTION CLASS REFER TO RELEVANT PD

NON PRE-CAGED BOLTING ASSEMBLIES TO BS EN 15048-1

NOTES:-

REV. NO. DATE REVISION

1. 01/10/2018 FIRST ISSUE

2. 01/10/2018 MODIFICATION

3. 01/10/2018 MODIFICATION

4. 01/10/2018 MODIFICATION

5. 01/10/2018 MODIFICATION

6. 01/10/2018 MODIFICATION

7. 01/10/2018 MODIFICATION

8. 01/10/2018 MODIFICATION

9. 01/10/2018 MODIFICATION

10. 01/10/2018 MODIFICATION

11. 01/10/2018 MODIFICATION

12. 01/10/2018 MODIFICATION

13. 01/10/2018 MODIFICATION



DATE: 28/04/2018

DESIGNER: JGD

CHECKER: JGD

APPROVED: JGD

STANDARD PRODUCT

DESCRIPTION: N/A

TITLE: GENERIC MICROPILE FRAME TO SUIT FLI T3A

DRG. NO. SK4744

TOTAL WEIGHT 479.4 kg

REV. A