

# Steelwork for Nuclear

Design

Detailing

Fabrication

Supply



**FLI** structures

# Platforms & Walkways

Main frame steelwork includes:

Flooring

Kick plates

Hand railing

Access options (Stairs / Ladders)





# Platforms

Example of lineside steelwork, supplied to Network Rail.

# Communication Structures

Towers up to 50m

Monopoles up to 35m

Headframes (for 5G)

Safety devices (anti-climb, fall arrest system, safe to climb certification).



# Door Frames

Supplying 3000 to Hinkley Point C.

Single & double frames.

Butted welded mitre joints.

Welded studs 10 & 19mm.



**FLI** structures

Sales@fli.co.uk

01452 722200

# Pipe Bridge Gantry & Foundations

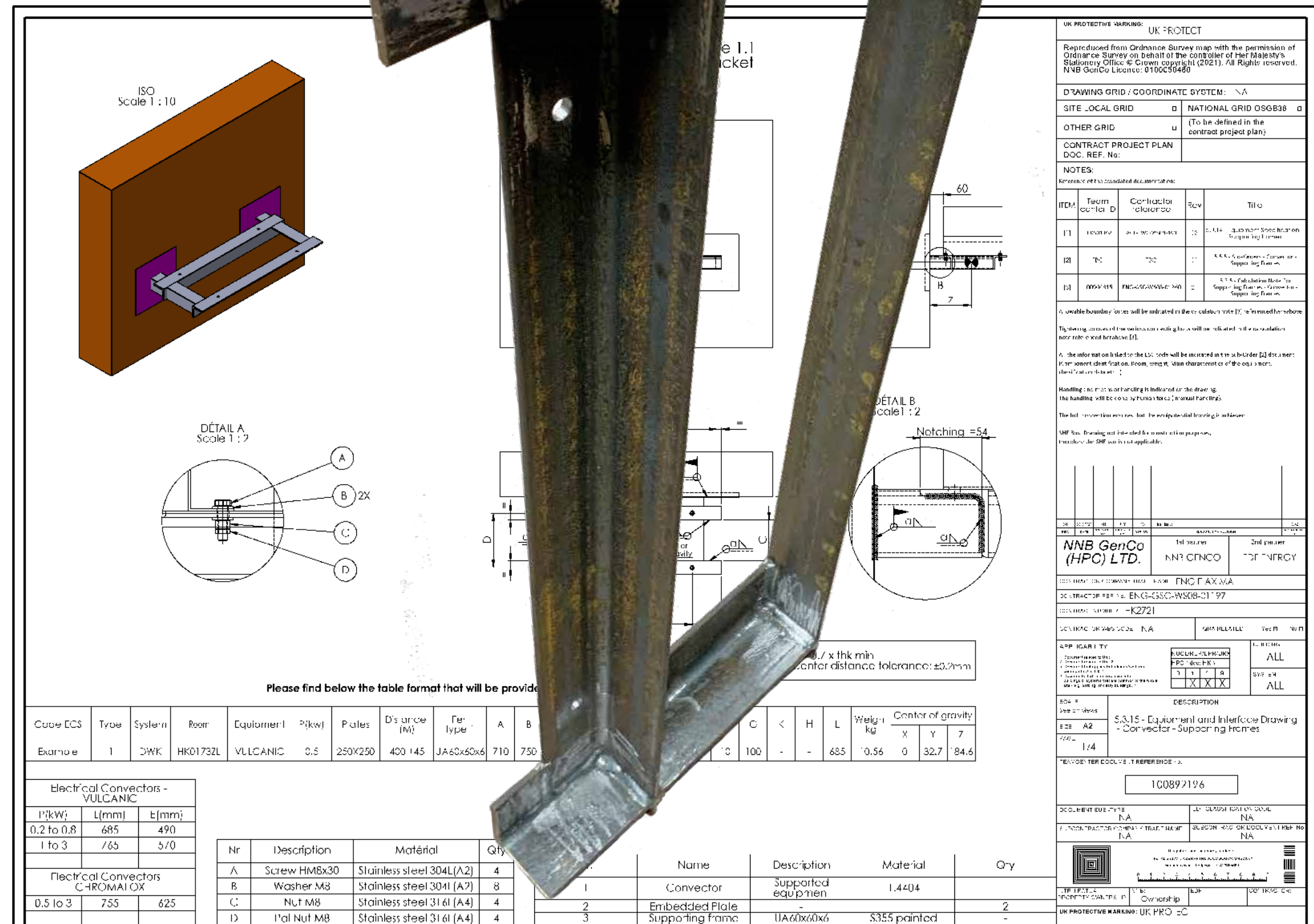
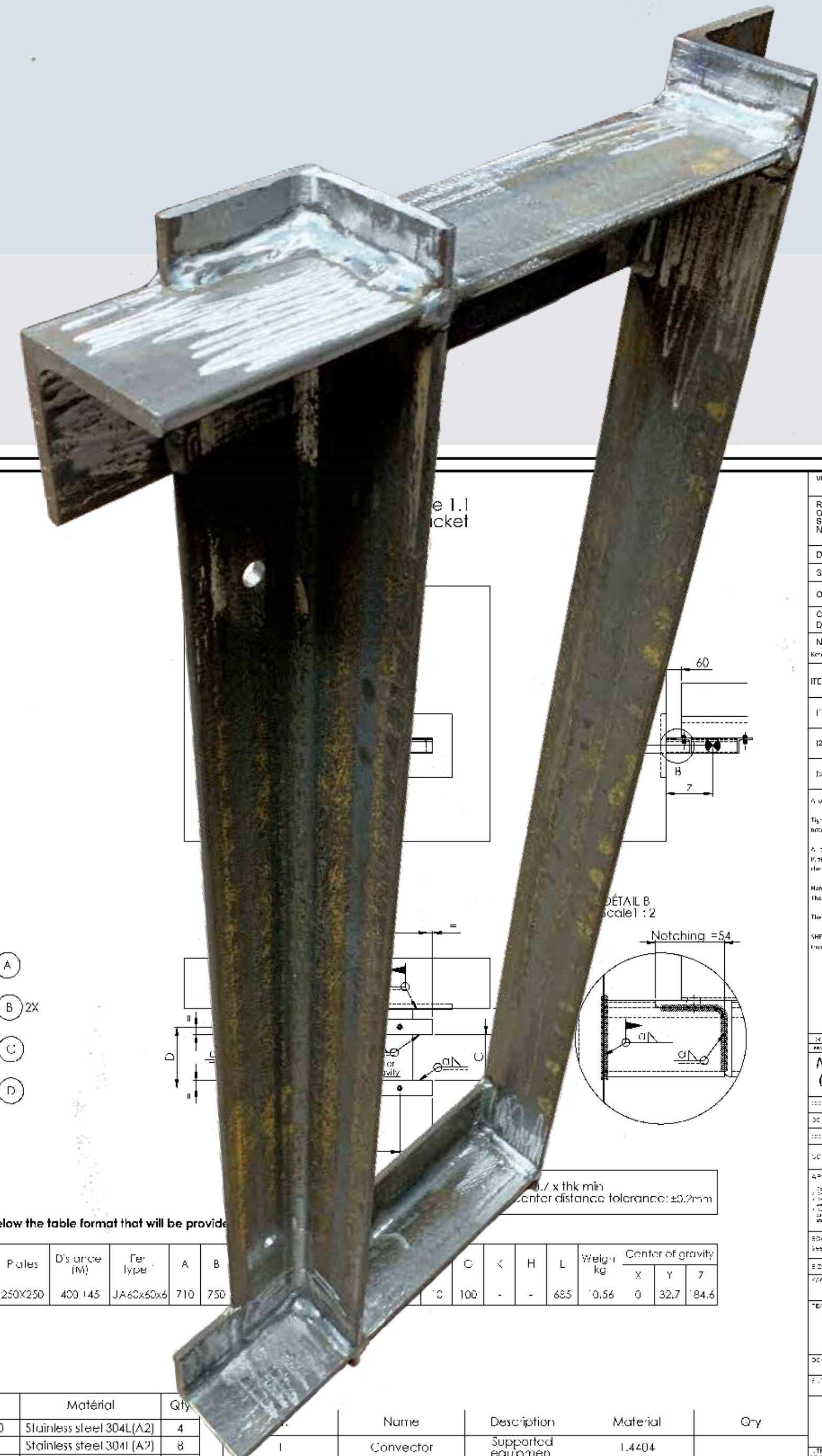
Gantry steelwork design, supply and install. Including the complete super & sub structures, using screw pile foundations to support gantry legs.



# FLI structures

## Support Brackets

Mechanical & Electrical  
HVAC  
Pipe works



**FLI** structures

Sales@fli.co.uk

01452 722200

# Design & Detailing: In-House

Full in-house capabilities- team of 18, designing & detailing products.

Structural, Mechanical & Civil engineers. Detailing & drawing to BIM level 1.





**FLI** structures

# Automation

Voortman : Saw & beam line

Ficep : Angle line

HGG : Tube line

Kaltenbach : Plate line

Break presses to 300T

6 axis robotic welding



Sales@fli.co.uk

01452 722200

**FLI** structures

# Fabrication

6000m<sup>2</sup> factory

Defect of 0.1%.

High quality steel fabrication reduces delays on site and increases product lifespan.

All procedures to BS EN ISO 15614-1

Welders qualified to BS EN 9696-1

Submerged Arc, MIG, MMA & Stud welding



**F4N**  
**Fit For Nuclear**  
Execution Class 4



# FLI structures

## Quality Control

UT (Ultra Sonic) Testing

MPI (Magnetic Particle Inspection) tests

Dimensional checks

Supplier audits

Galvanising / coating readings

Quality Assurance:

RISQS, HSS20, Fit 4 Nuclear, ISO9001,  
ISO14001, OASAS18001, ROSPA Gold

HSQE Approvals:

ISO9001:2015

OHSAS18001:2007

ISO14001:2015

RISQSBS EN 1090-1:2009

Execution Class 4

