

# LOC & FSP Platforms & Foundations

Full Range of LOC Platforms & foundation interfaces.

Network Rail approved designs.

Form 2 & 3 (A & B) available.

Multi-LOC has cantilevered design and uses fewer piles.

Mini-LOC further reduces cost.

Screw Pile, H Pile or concrete foundations.

GRP/FRP-Hybrid platforms available.

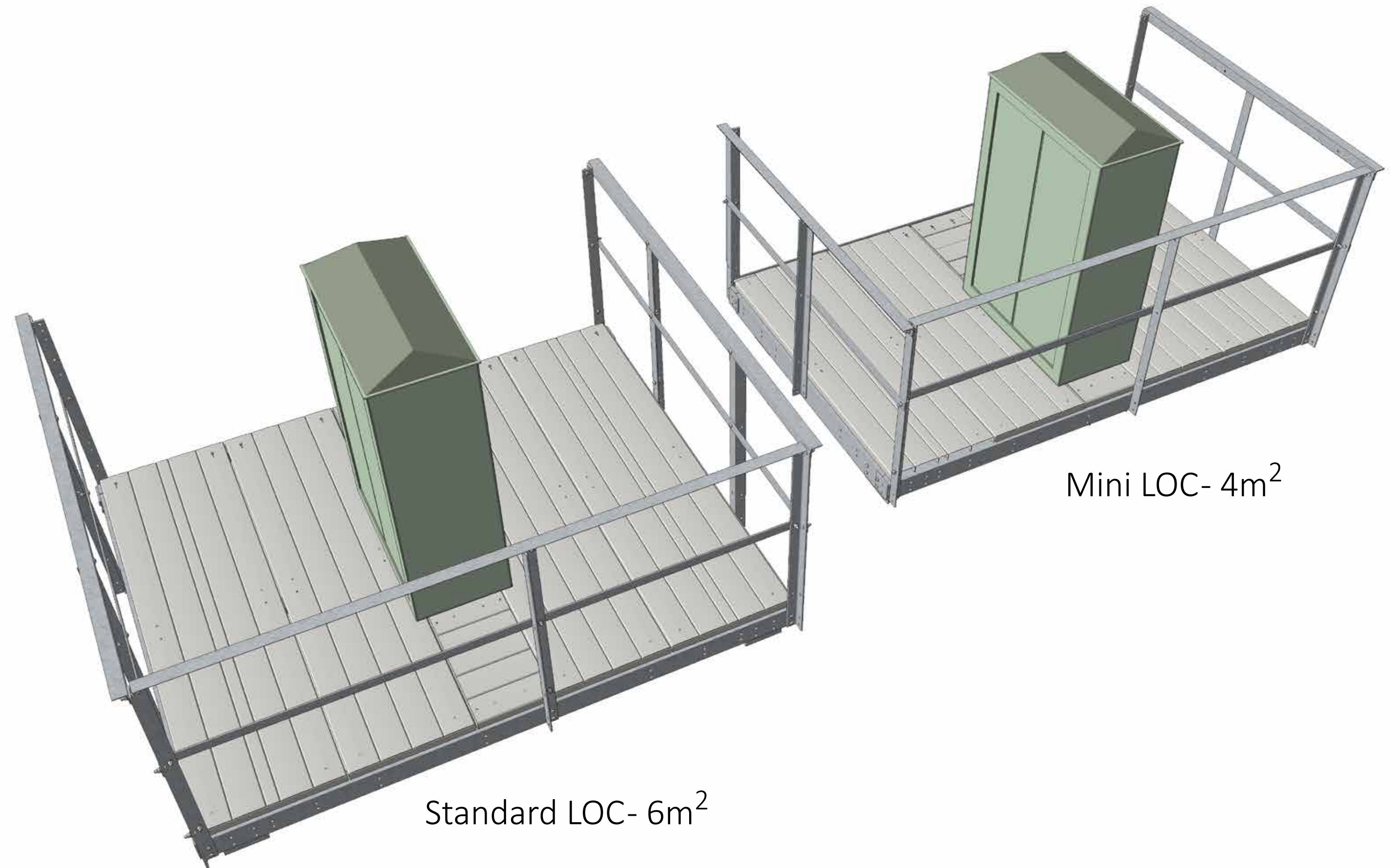




# LOC Platform Options

Standard LOC platform is 6m<sup>2</sup>.

Mini LOC platform has a reduced footprint of 4m<sup>2</sup>, due to less depth at the rear of the cabinet.



Standard LOC - 6m<sup>2</sup>

Mini LOC - 4m<sup>2</sup>

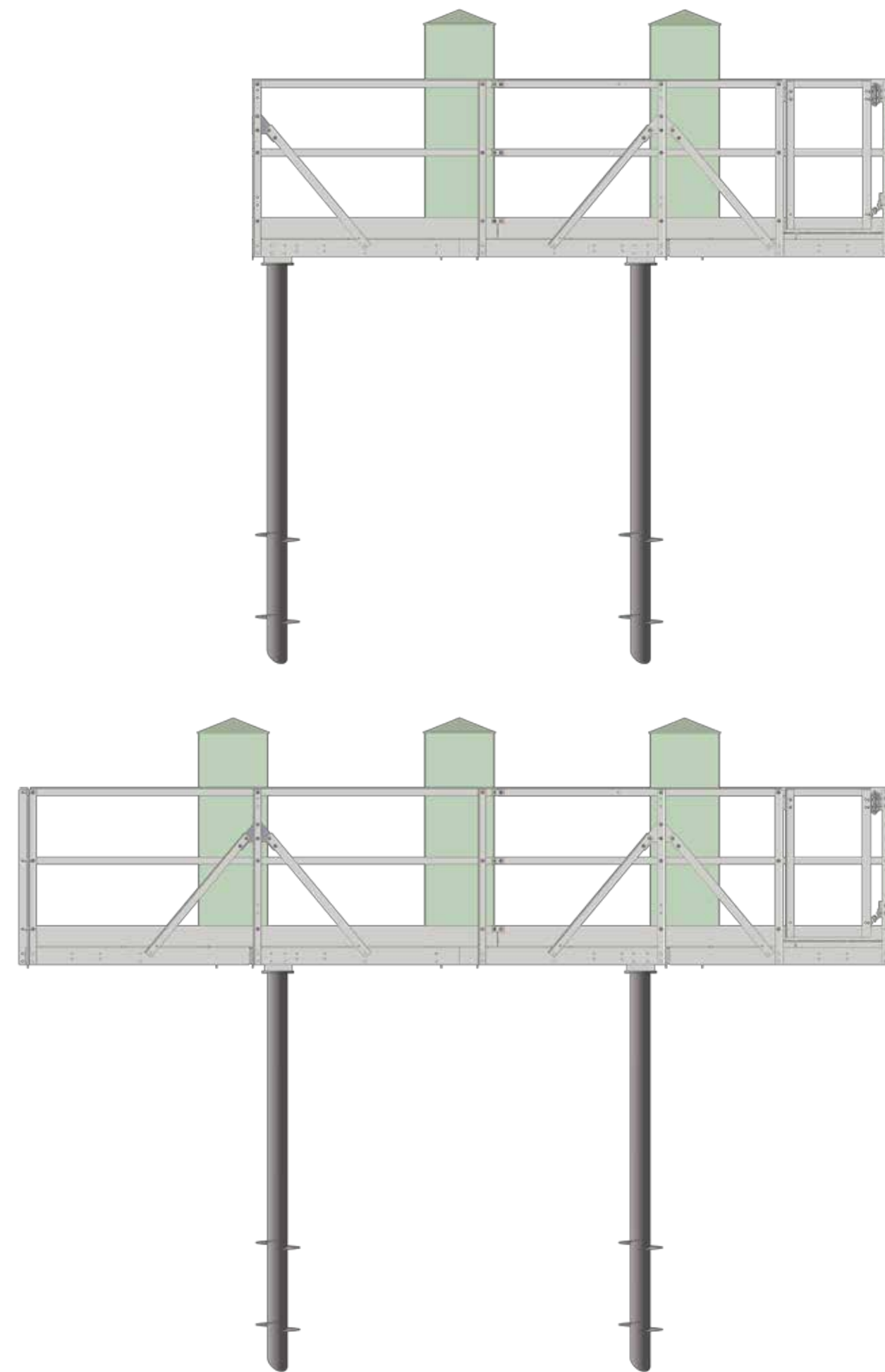


# Multi-LOC Platforms On Fewer Piles

FLI's multi-LOC platforms have a cantilever platform extension, which enables Double & Triple LOC Platforms to be installed off 4 piles, negating the need for additional foundations.

50% fewer piles on Triple LOCs saves money in materials and reduced time on site by an RRV shift.

Our Quad LOC Platform use 6 piles rather than the 10 piles of other platform solutions.





# GRP/FRP LOC Platforms

GRP / Hybrid LOC platforms are available, using GRP flooring, Handrails and Kick Flats. All user Interfaces use non-conductive materials.

Solutions include:

Steel Frame & Piles

GRP handrail, flooring

Optional GRP gate

Firebox & Trunking



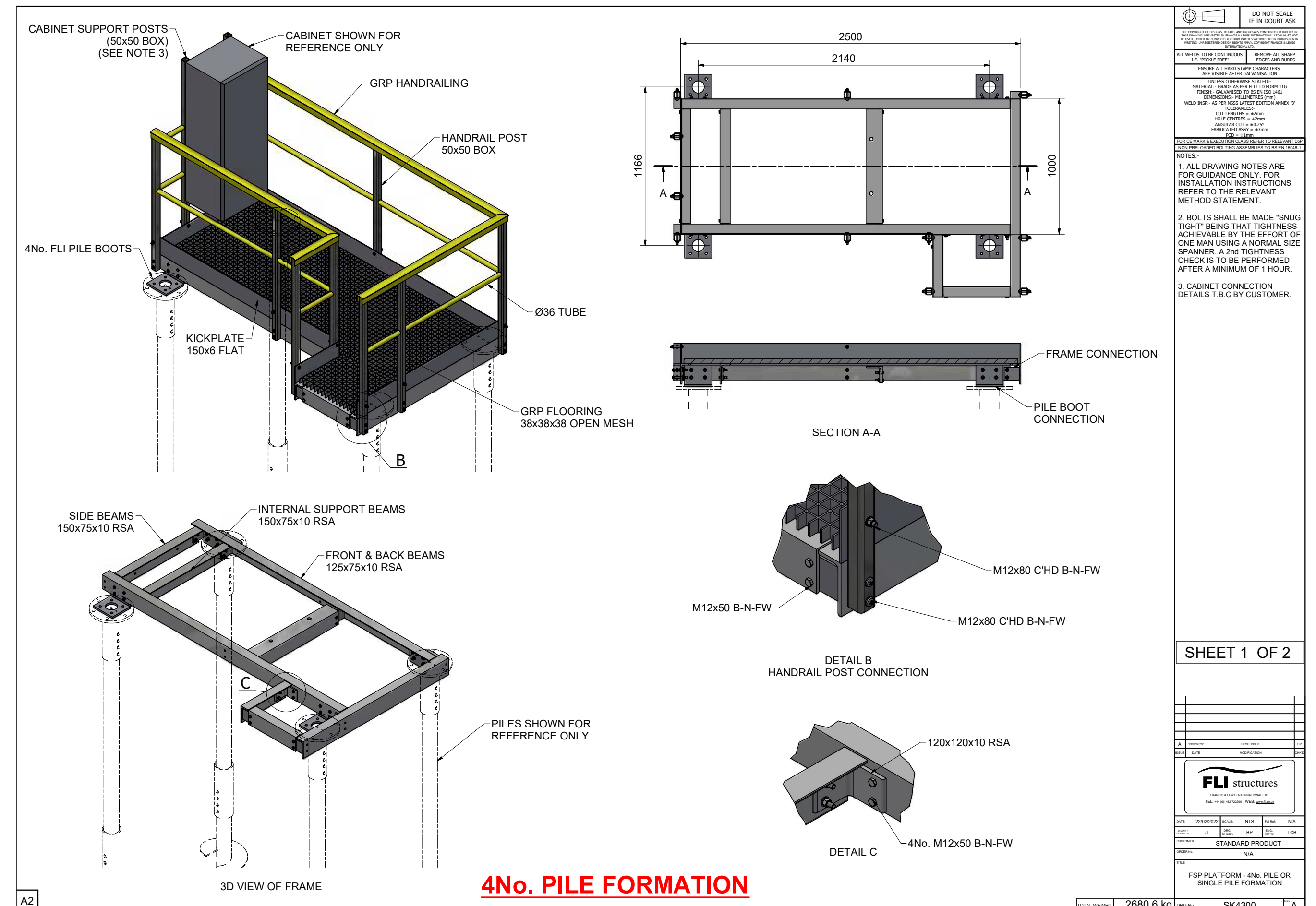


## Functional Supply Point Platforms

FSP platforms available to standard NWR or approved FLI designs.

Steel or GRP railing and flooring on steel beams.

Choice of 4 pile, single pile or hand installed pile foundations.





# Other Foundation Options

Low cost solutions for any ground conditions.

Driven 'H' Piles:

Low cost and fast installation.  
203UB (approx) 4-6 metres depth.

Screw Piles:

Fast installation on steep slopes or soft ground.  
Single Pile, 355mm diameter.  
Avoiding or bridging services.  
Multiple Piles, 114mm diameter.

Concrete:

Interfaces for traditional concrete  
foundation.

Kentledge Foundation:

Hard ground solution.  
Form 001, 2 & 3 designs  
of platform & foundations.  
No concrete or piling.  
No ground penetration.  
Foundation & structure can  
be carried to site & installed  
by hand.



Platform with single screw pile



# Hard Ground Kentledge Foundation

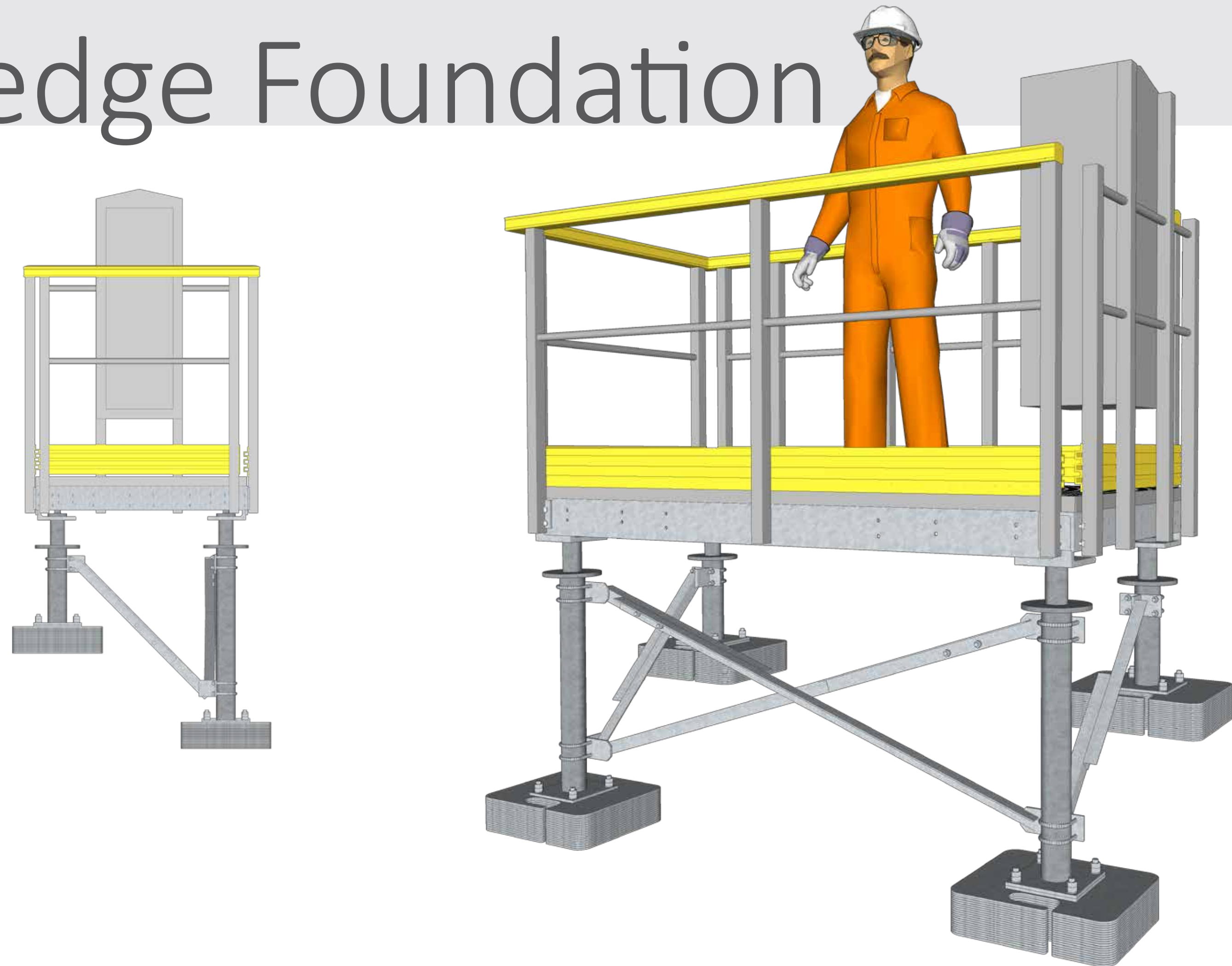
Platform foundations without piling or concrete.

These kentledge foundations require no significant excavation, no ground penetration and no plant for lifting or digging.

Particularly helpful for sites with hard or contaminated ground, as well as removing the need for plant.

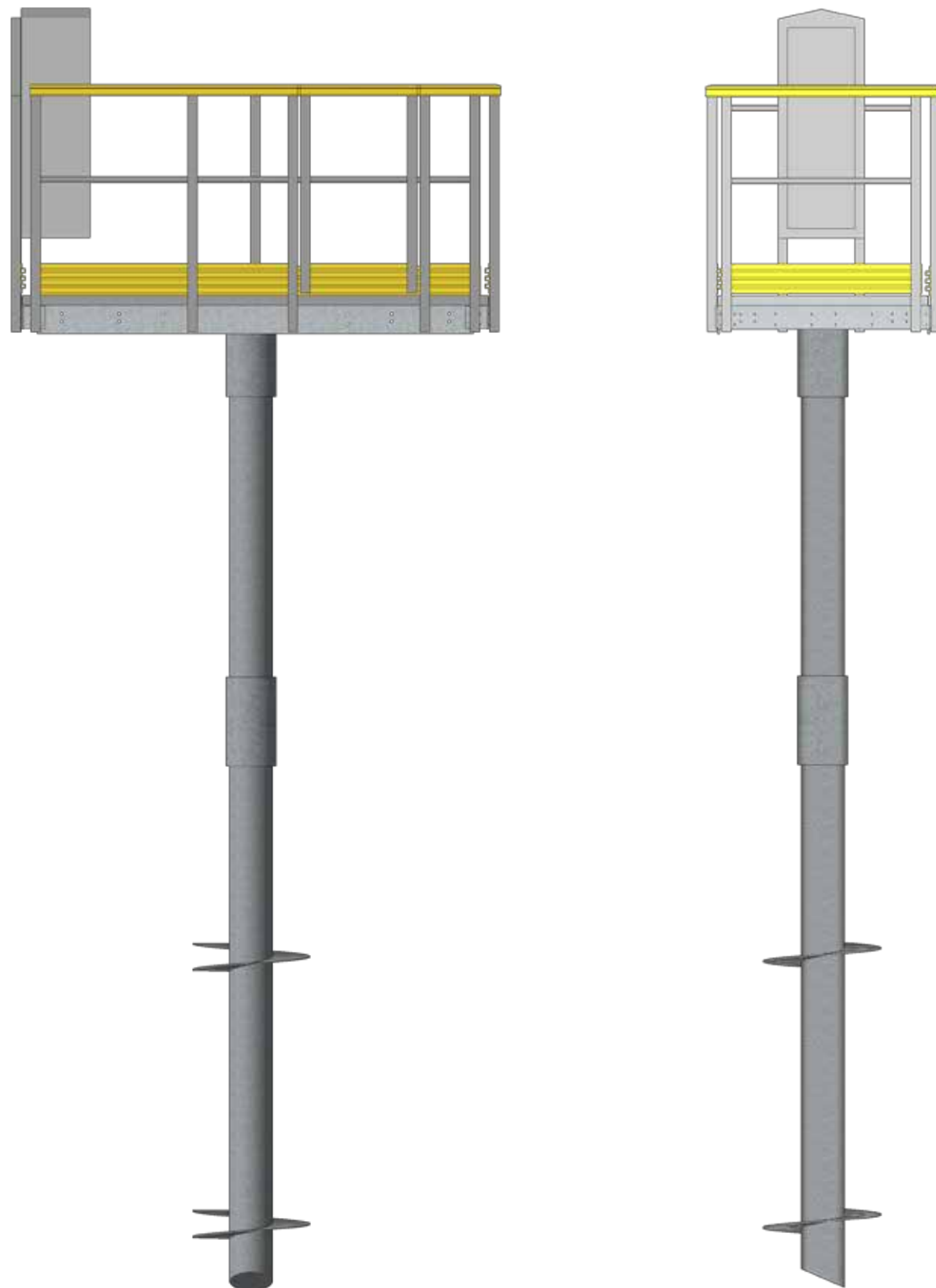
The kentledge plates are stacked to form the gravity foundation.

Each plate weighs 12.5kg to make carrying one in each hand comfortable, safe and practical. This means that the entire foundation can be carried to site by hand (without plant) as well as installed without plant.





# Single Pile Foundation



## Single pile foundation.

Single, larger diameter Screw Pile.

Form 001, 2 & 3 Designs of platform & foundations.

Installation by RRV.

Fast installation of LOC, FSP and refuge platforms.





# Hand Install Screw Piles

Smaller diameter Screw Piles, 76, 89mm, or square shaft screw piles can be installed with hand held equipment, enabling install to take place during green zone working.

Negates the need for RRV's during installation.

Lowering the cost works on site.

