

Monopoles for streetworks

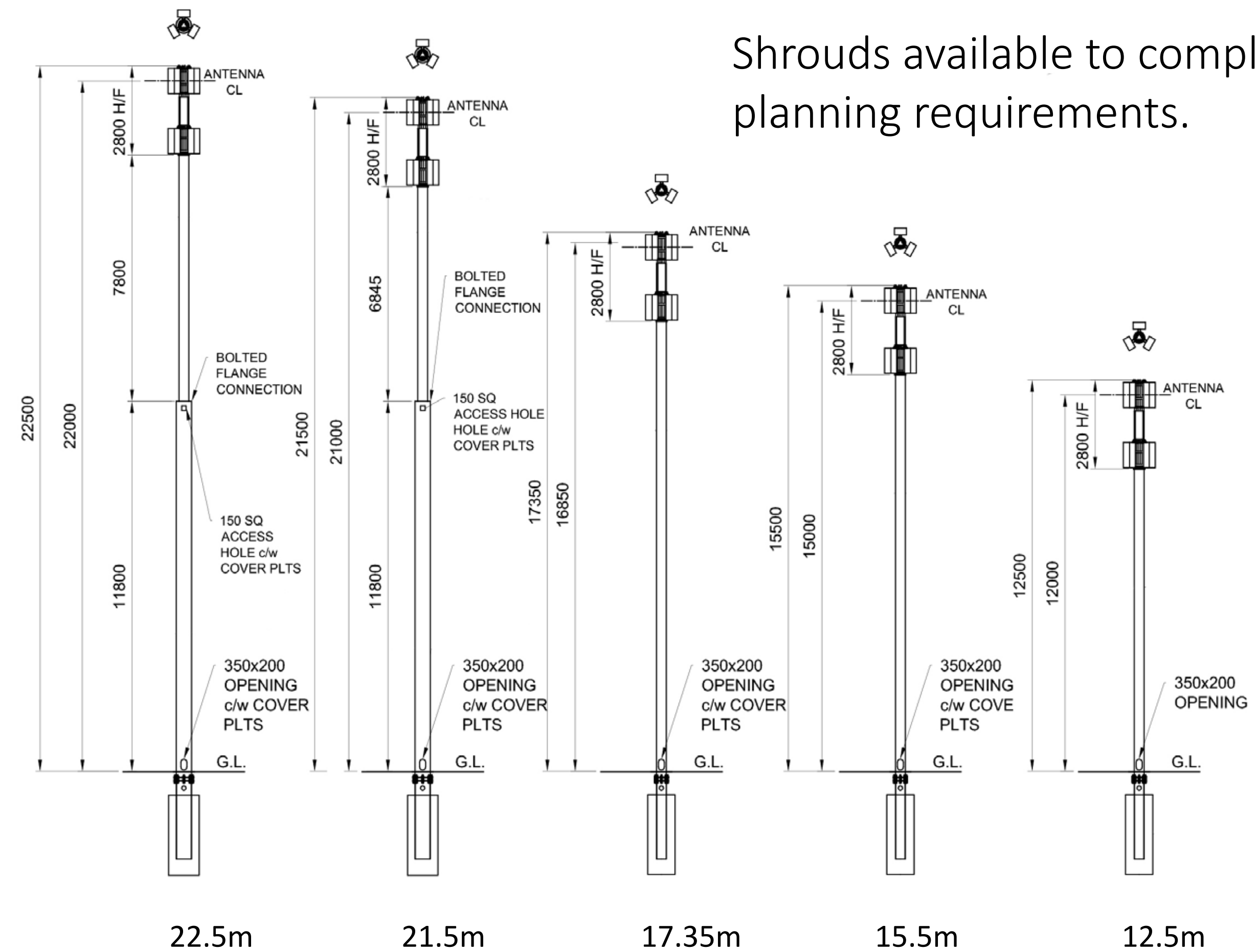
FLI produce a range of monopoles and foundations for streetworks applications and greenfield sites requiring unobtrusive, smaller structures.



Monopoles for streetworks



Shrouds available to comply with planning requirements.



Sales@fli.co.uk

01452 722200

FLI structures

Telegraph Pole

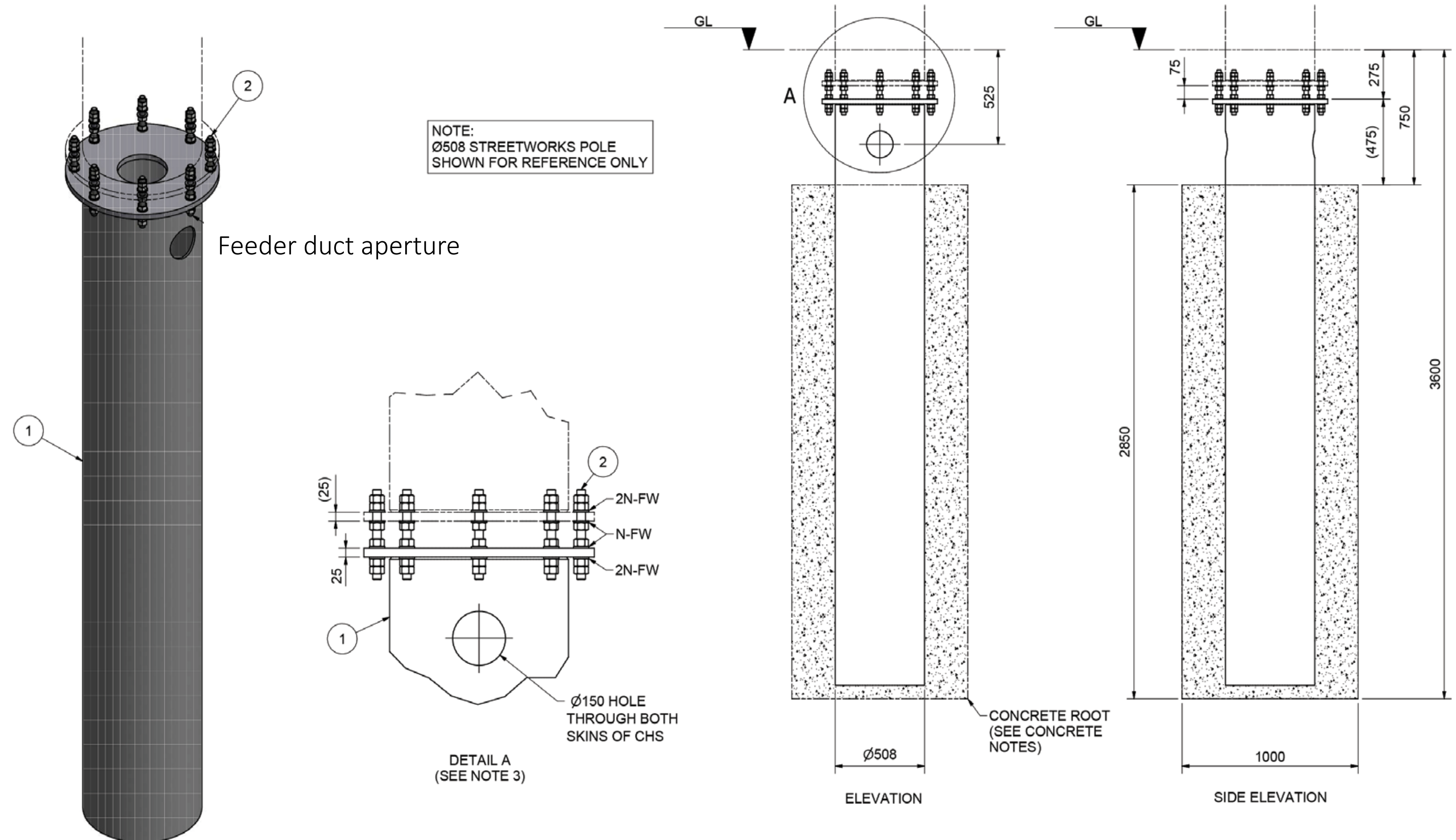
The FLI Telegraph Pole is ideal for micro sites in both greenfield and street locations. This simple design offers a quick and cost effective solution with minimal visual impact. The Telegraph Pole can be fitted with studs for Latchway removable climbing rungs or brackets for a Metreel removable ladder and can be supplied with a CHS root or screw pile foundation.



FLI structures

Base Root for monopole

Traditional root designs are available for sites where screw piles or grillages are not appropriate.



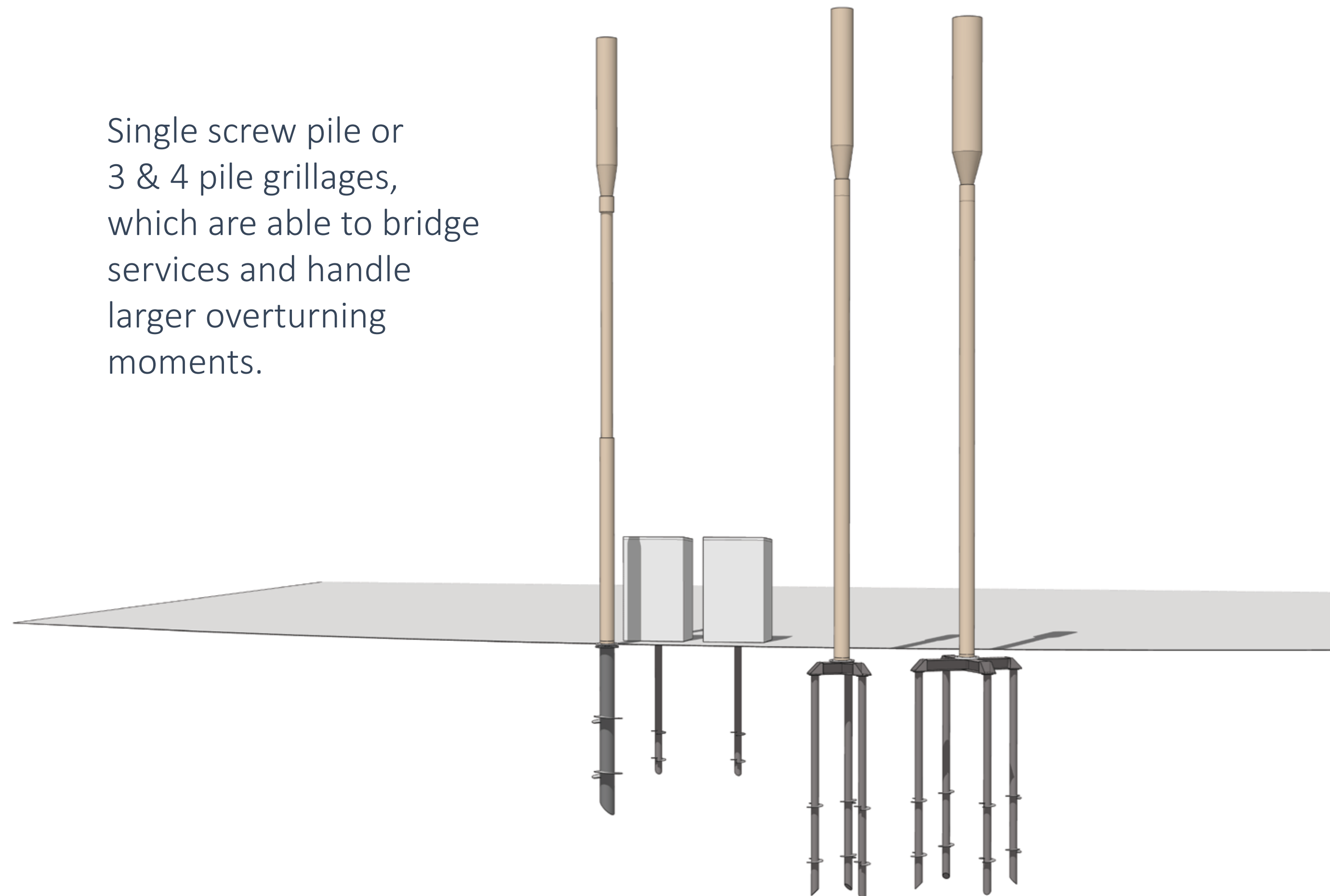
FLI structures

Grillages for streetworks monopoles

Screw pile foundations are designed by FLI's geotechnical engineers taking account of the ground conditions, to withstand vehicle impact loads and wind loading of the pole.

FLI can provide various designs to overcome the limitations of root foundations, either by fitting in between or bridging over buried services.

Single screw pile or 3 & 4 pile grillages, which are able to bridge services and handle larger overturning moments.



FLI structures

Screw Piles for streetworks monopoles



Replaces Root Foundations.

Feeder management through pile.

Minimal excavation.

Rapid installation.

No wet trades.

Solutions bridge & avoid buried services.

Designed to support monopole loadings.

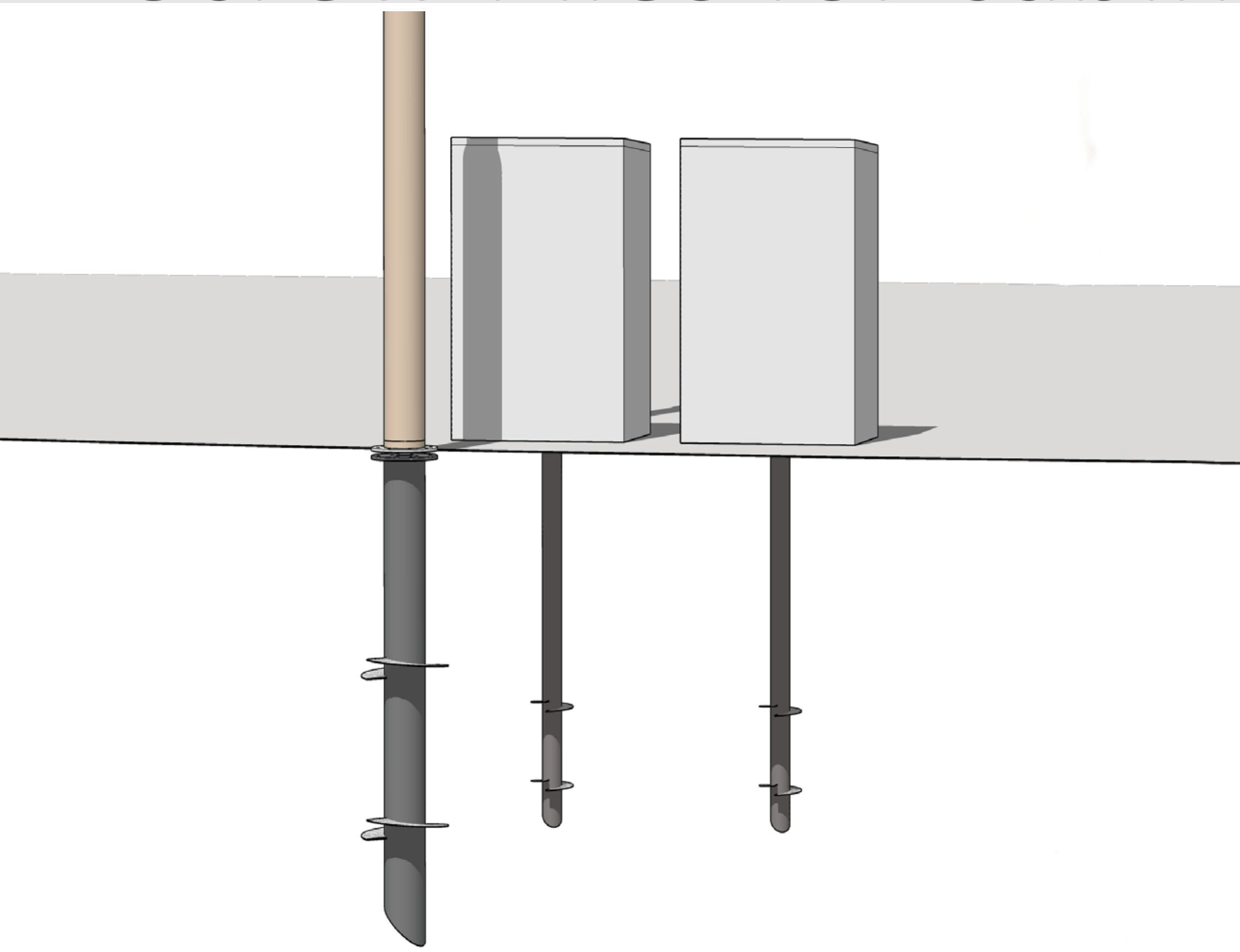
Rotational flexibility.

Levelling devices.



Pile cap with hold down bolts.

Screw Piles for cabinets



Cabinets mounted on single piles.

FLI structures

4G & 5G streetworks monopole

Simple upgrade path to 5G or multi user, without replacing any of the structure or lowering the pole.

Slim streetworks profile without in-factory rigging or painting.

Easy access for on site maintenance.



Pole with shroud removed.

Mounting equipment in sizes traditionally associated with streetworks installations.



Pole with shroud in place.



Site share with shorter shroud.



No shroud.

Mounting larger equipment.

In this illustration:

2400 x 500 x 200 panel antennas.

1000 x 500 x 200 MIMOs

550 x 400 x 200 MHAs

FLI structures

4G & 5G streetworks monopole

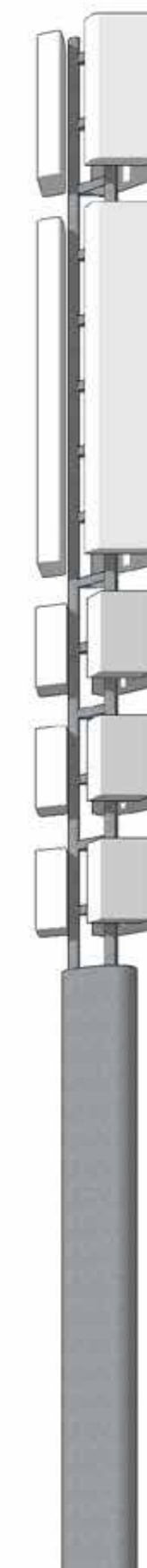
Simple upgrade path to 5G or multi user, without replacing any of the structure or lowering the pole.

Slim streetworks profile without in-factory rigging or painting.

Easy access for on site maintenance.



Pole with shroud in place.



No shroud.

Mounting larger equipment.

In this illustration:

2400 x 500 x 200 panel antennas.

1000 x 500 x 200 MIMOs

550 x 400 x 200 MHAs

Streetworks monopole for rail

