

Sales@fli.co.uk

01452 722200

FLI structures

5G Telecoms Trees

Cypress:

Design

Specification

Access

Planning Drawings

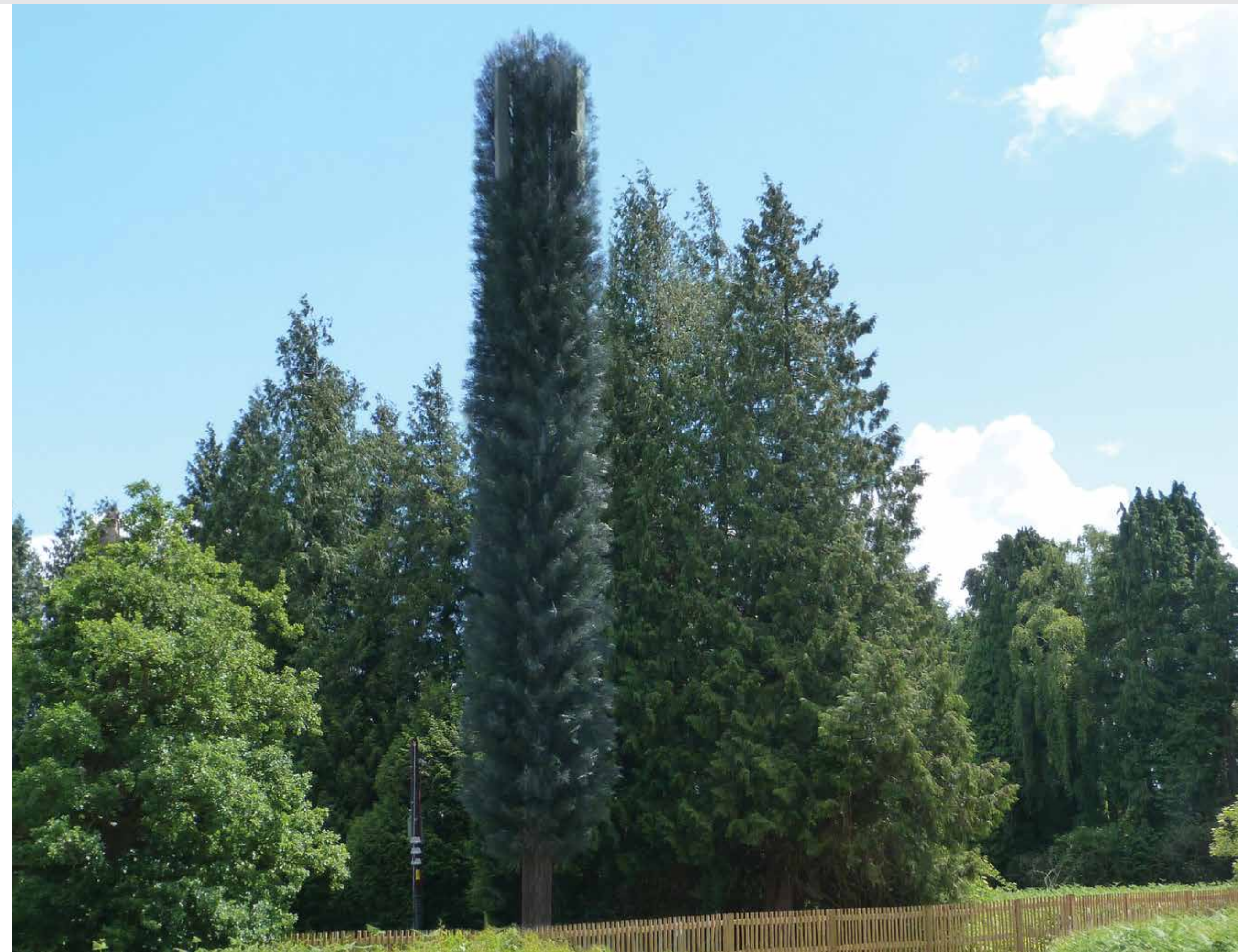
Pine:

Design

Specification

Access

Planning Drawings



FLI structures

Sales@fli.co.uk

01452 722200

Cypress Tree

Approved and used by all major operators.

Can accommodate up to 3 users.

Antennas concealed within foliage.

Heights to 30m.

Over 100 installed across Europe.

Extendable and climbable options.

Removable foliage.

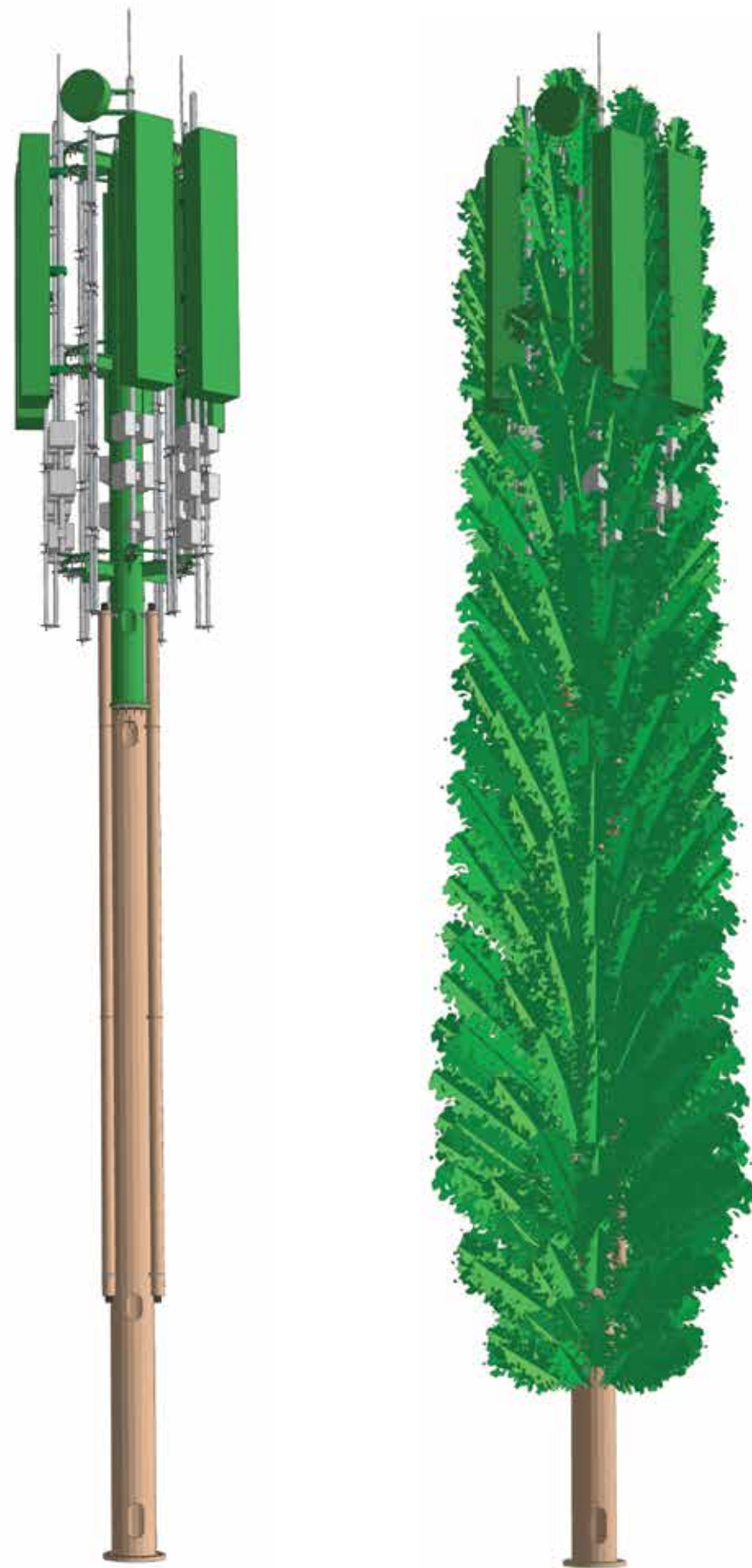
Feeders can run both internally and externally.

Hatches positioned for easy rigging.



FLI structures

5G Cypress Tree



Type 2b Loading:

6 no 3000 x 550 x 350 antenna apertures

30 no 300 x 300 x 150 MHA units

36 no feeders

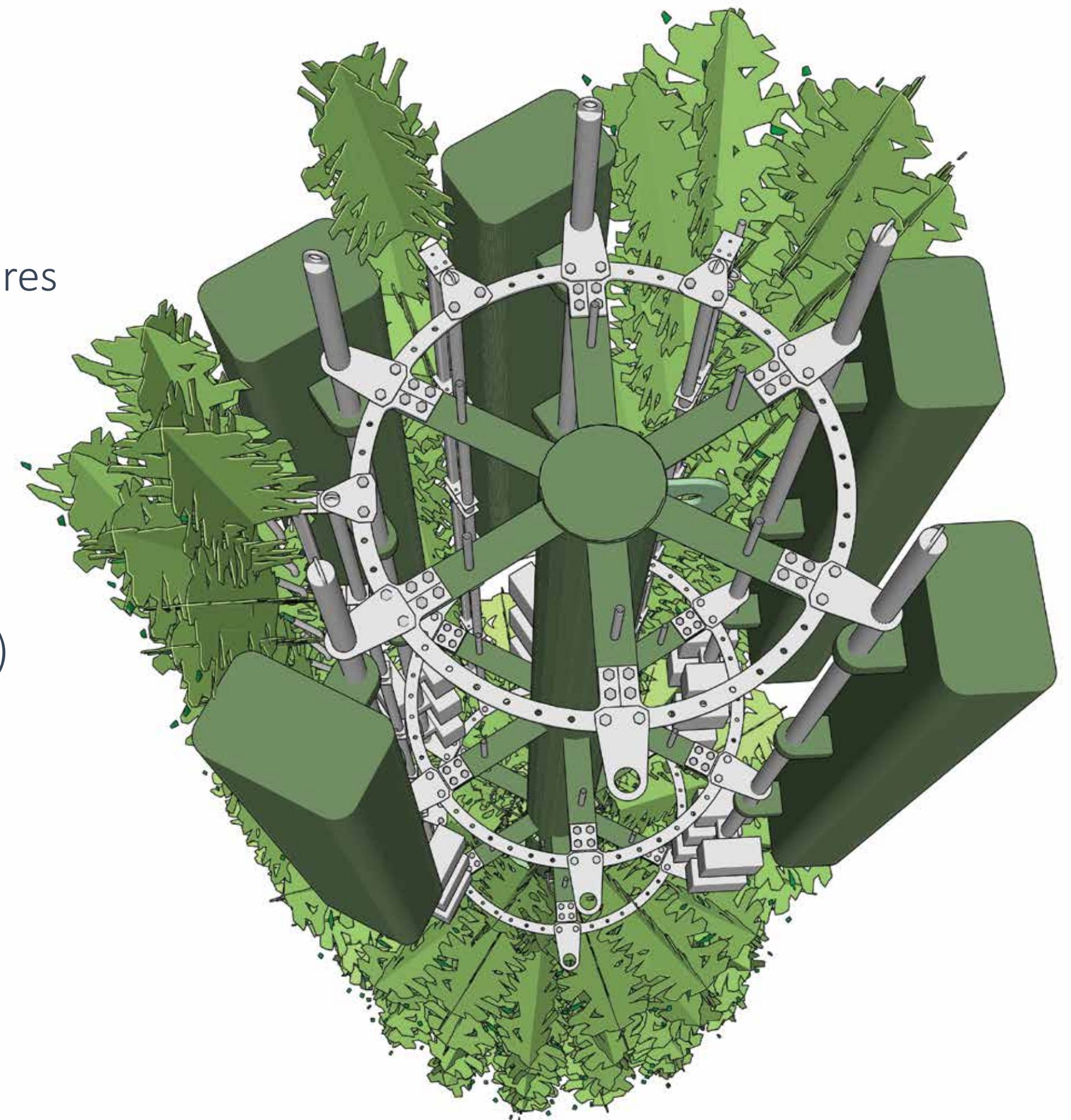
2 no Ø600 Microwave Dishes

Typical Site Parameters:

Wind Speed- 26m/s (10 minute mean)

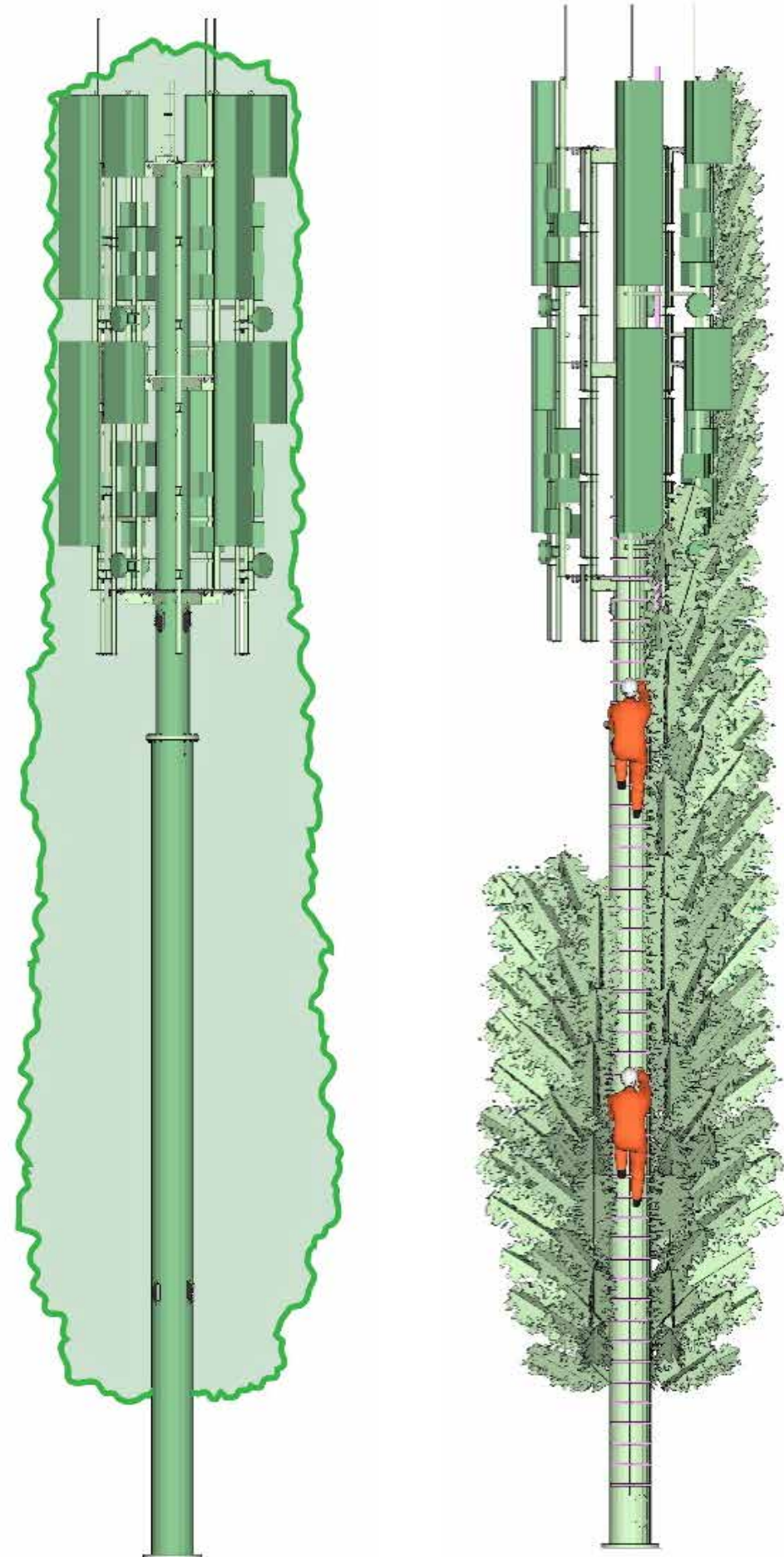
Altitude- 100m above mean sea level

Terrain Category- 3 (Ka=1.0)

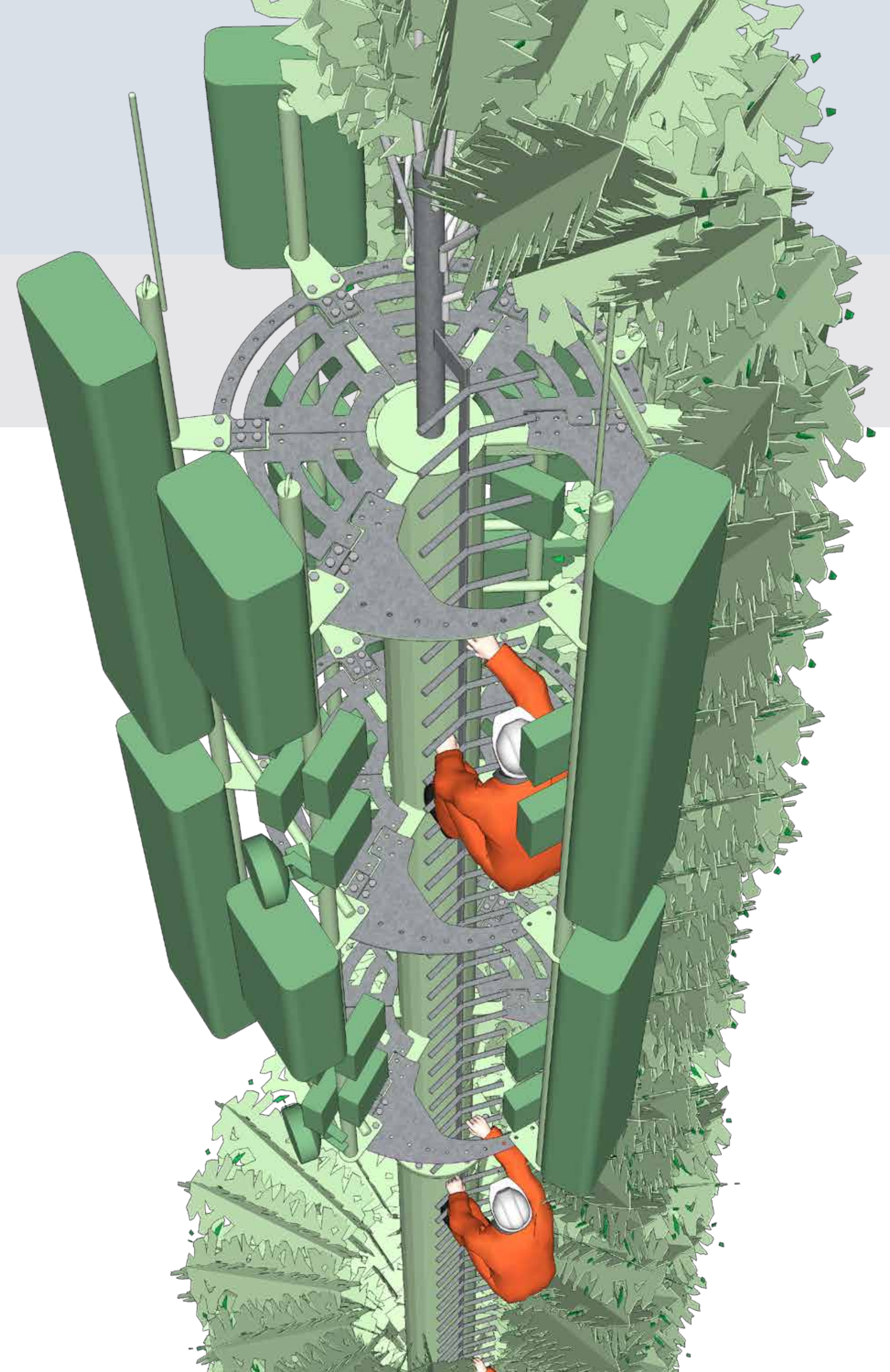


FLI structures

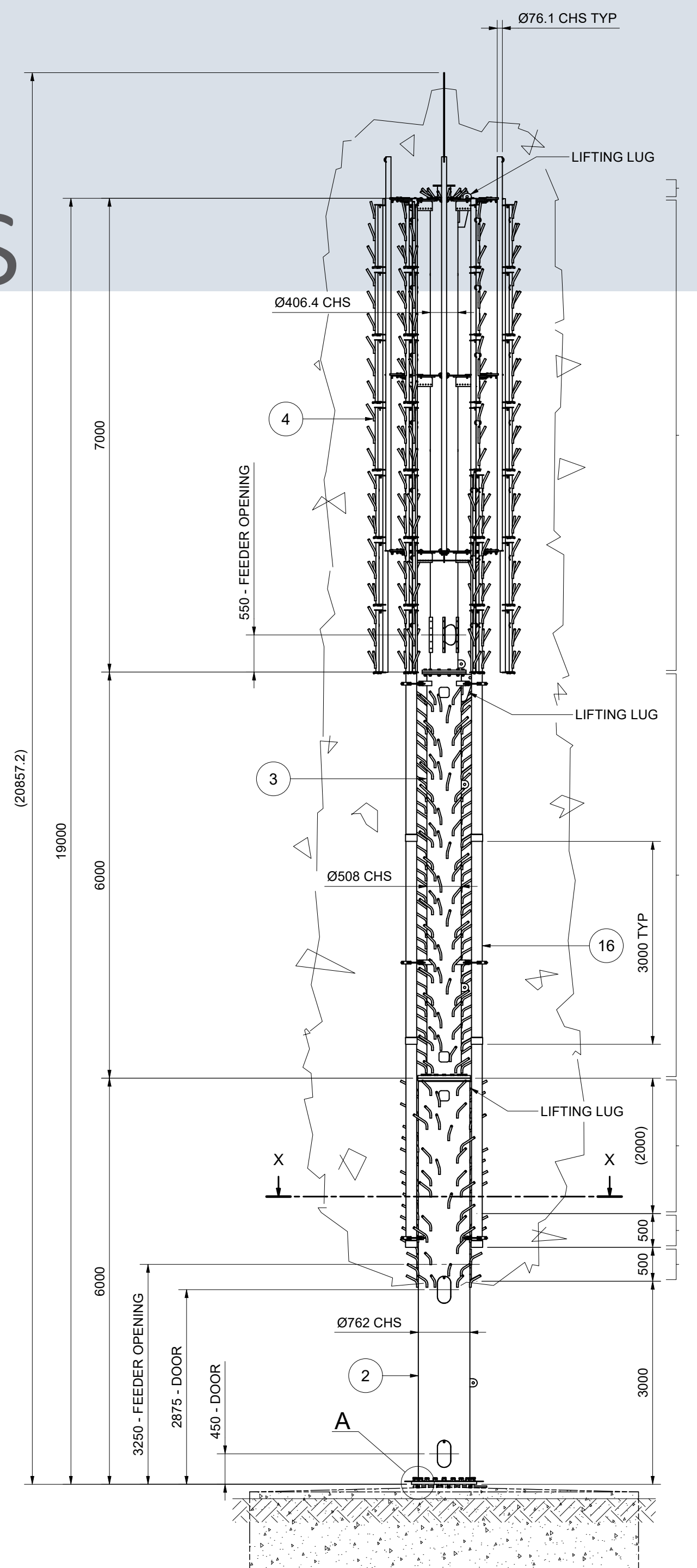
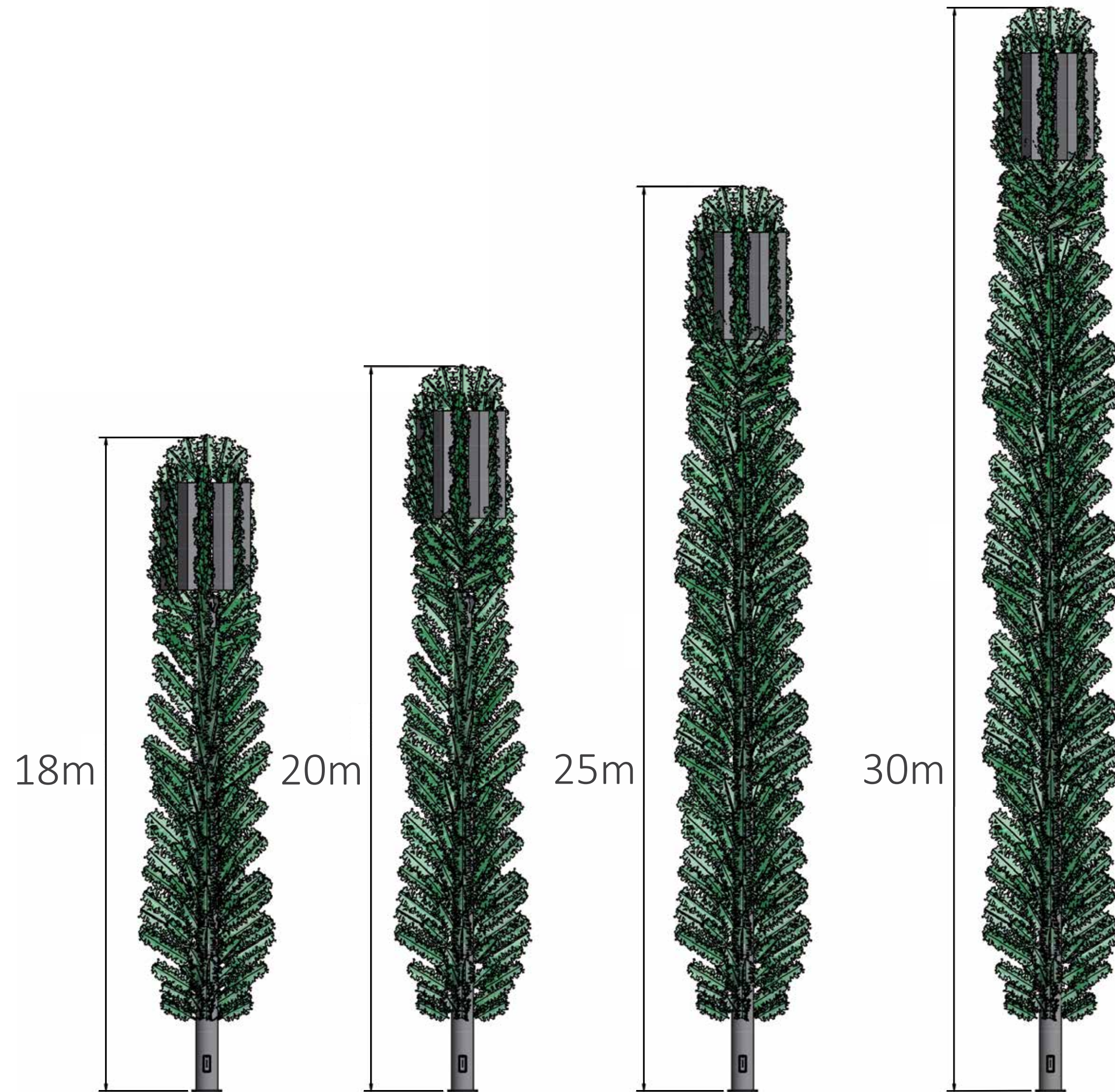
Climbable 5G Cypress



- Integrated ladder and platforms.
- Clear climbing path.
- Safer, faster, easier and cheaper maintenance.
- Removes the need for a cherry picker.
- Reduces interaction with and risk to foliage during maintenance.



5G Cypress Planning Drawings



5G Pine Tree

FLI Trees have been in service for over 20 years across Europe.

Approved and used by all major operators.

UK's only 5G trees.

Accommodates up to 3 operators on 3 user levels.

Wind tunnel tested to 106 knots (122mph).

No fatigue issues.

Climbable structure.

Tested for RF transparency.

Fire resistant foliage.



5G Pine Tree

Type 1a Loading:

12 no 2200 x 550 x 350 antenna apertures

24 no RRU units

12 no MHA units

12 no Routers

6 no BOBS

24 no Feeders

6 no Combined DC and Fibre

4 no Ø600 Microwave Dishes

Typical Site Parameters:

Wind Speed- 26m/s (10 minute mean)

Altitude- 100m above mean sea level

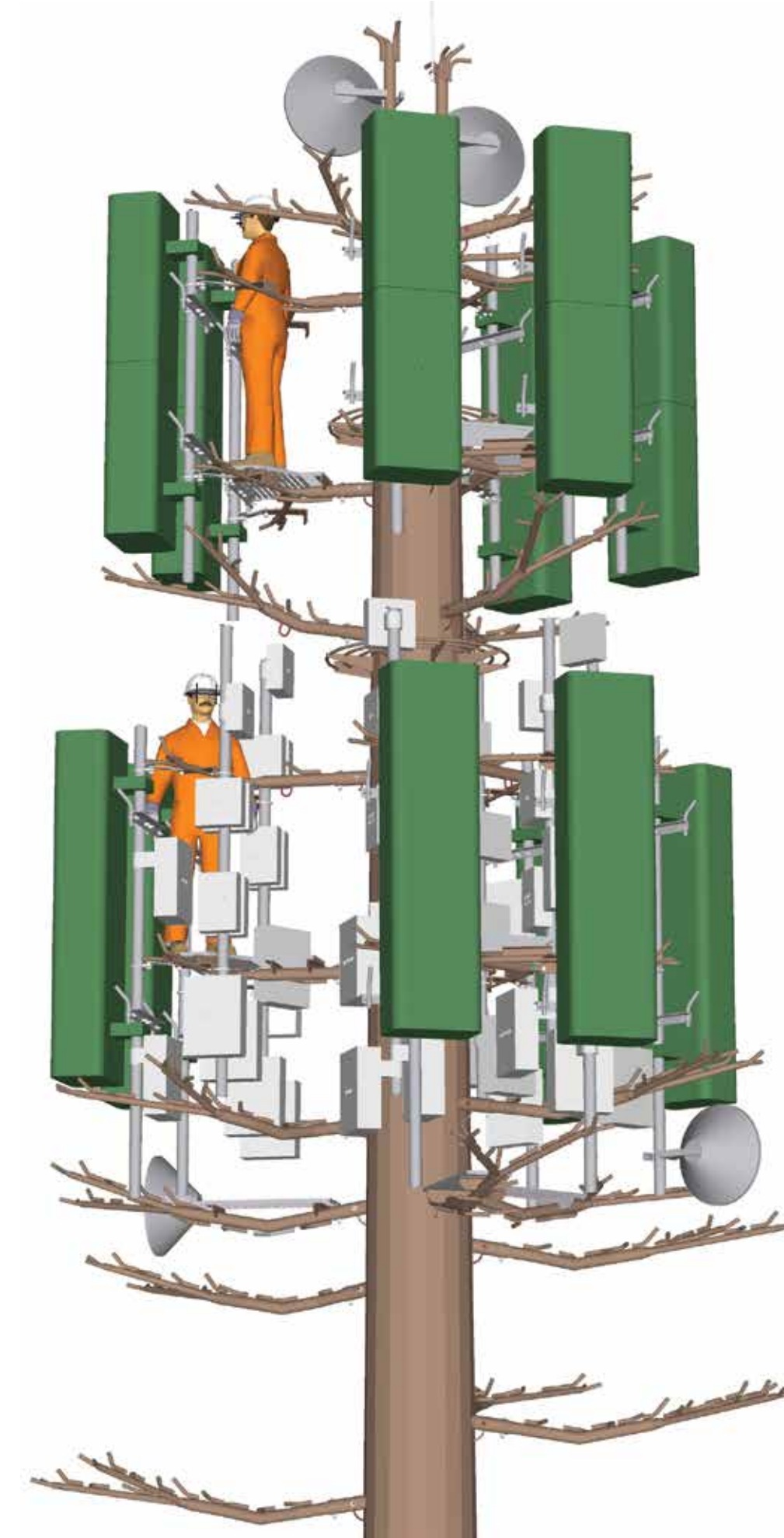
Terrain Category- 3 (Ka=1.0)

Climbing path typically on step pegs from 3m,
with removable steps from 0- 3m.



FLI structures

5G Pine Tree



Provision for 2 no Ø600
MW dish mounting.

Active antenna mounting.

Latchway Fall Arrest to full
height and landyard loops.

Passive antennas and
radio equipment zone.

Provision for 3 no Ø600
MW dish mounting.

5G Pine Planning Drawings

