

Telecoms Newsletter – Q3 2025

Welcome to FLI's Q3 newsletter. Inside, we're sharing the latest updates, product developments, and project highlights from across the business. From new system launches to safety innovations and streamlined services, here's what we're covering this quarter:

In This Issue:

- **New Product:** Temporary Tower & Foundation System
- **Engineering Focus:** Aged Structures & Design Life
- **Event Recap:** FLI at MATS 2025 Headframes for Safe Working at Height
- **Lead Time Update:** GDCs Now Under 2 Weeks
- **Project Spotlight:** Success with 30m Radar Tower Installation
- **Screw Piles:** Special Project & New Application



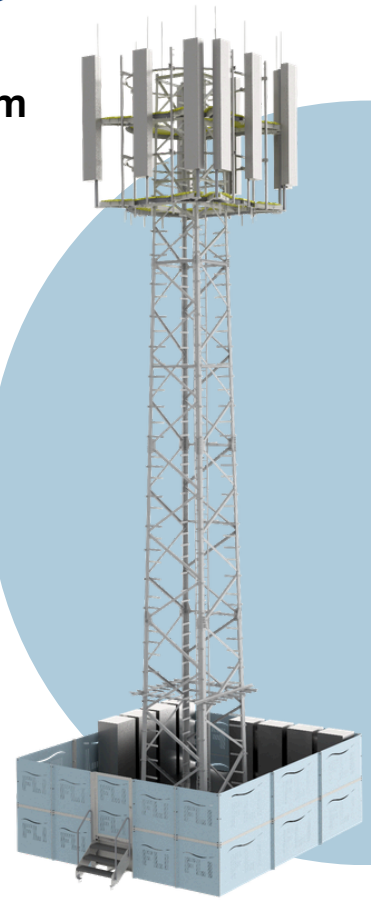
New Product: Temporary Tower & Foundation System

FLI has launched a new **kentledge-based temporary tower and foundation system**, designed for rapid deployment to special events, i.e. festivals and sports events. No groundworks or permanent fixings are required. FLI's (patent-pending) system **provides full structural stability for either SLP or ATS1301 Lattice Towers, available in heights from 10m to 30m.**

Key Benefits:

- No ground penetration
- Modular components – rapid installation
- Suitable for congested sites & ground-restricted areas
- Ideal for events, stadiums, parks, & public venues

Learn more: Download the brochure at fli.co.uk or contact us to discuss how this solution can support your next project. www.fli.co.uk/temporary-towers/



Engineering Focus: Aged Structures & Design Life

Many communication towers in use today are reaching, or exceeding, their original design life. Before any modification, upgrade, or reuse, it's critical to understand the true structural condition of these assets.

FLI's GDC service can factor in fatigue, degradation, and remaining lifespan, ensuring new designs are safe, compliant, and built on reliable foundations.

Older towers may no longer meet current loading or safety standards, after years of use or exposure. Our team supports clients with assessments and tailored engineering solutions, whether for refurbishment, upgrade, or safe decommissioning.

Learn more: Contact sales@fli.co.uk to find out how we can help assess and extend the life of your towers. www.fli.co.uk/aged-structures/

FLI at MATS 2025: Advancing Safe Working at Height

This quarter, FLI proudly participated in MATS 2025, showcasing our commitment to safety and innovation in working at height. Our team was on-site demonstrating our Headframes equipped with **integrated working platforms**, designed to enhance safety and operational efficiency for temporary tower deployments.

Our Engineering Team Leader, Trevor Burden, and Sales Team Leader, Tony Parker, delivered a technical presentation focused on additional safety features for headframes and best practices for working at height. This session highlighted FLI's ongoing efforts to raise industry standards and provide safer solutions for engineers and site teams.

*Don't just look up and down, **look out**. Look out for our workers at height.*

We thank everyone who visited us and engaged in discussions about advancing safe, practical working-at-height solutions. For more information on our headframes and safety innovations, please contact our team.

Learn more: To watch our presentation or speak directly with Tony Parker about FLI's commitment to safe working at height, please contact us at sales@fli.co.uk.



FLI GDC Lead Times: Expanded Capacity, Reliable Turnaround

As demand grows, FLI has expanded our GDC teams to better support your projects. We're proud to offer a **consistent lead time of less than two weeks**, balancing quality and thoroughness with timely delivery.

Our GDC tool continues to provide precise, engineered solutions that help you meet project deadlines without compromising on safety or performance.

Learn more: Visit our website to explore the GDC Tool and see how it can accelerate your project planning. www.fli.co.uk/markets/global-design-check/



Project Spotlight: Successful Radar Tower Deployment

This quarter, FLI successfully **designed, supplied, and installed a 30.0m AD4450 Radar Tower** for a high-profile client in the South West. We extend our thanks to everyone involved for their dedication and expertise throughout the project, which was delivered safely and on schedule.

Special thanks to Joe Stoud and the entire team for their commitment to quality and collaboration in bringing this complex installation to fruition.

Learn more: www.fli.co.uk/markets/radar-towers-and-monopoles/

FLI structures

Screw Piles: Special Project & New Application

While screw piles are widely known for supporting telecoms Lattice Towers and Monopoles, their versatility extends far beyond. **A recent project on the banks of the River Avon in Bristol demonstrated their broader civil engineering potential.**

FLI installed **138 four-metre screw piles**—62 west and 76 east of a bridge—to support a reinforced concrete platform. This platform will carry heavy plant required to carry out remedial works on the riverbed and riverbank. **The solution avoided extensive excavation** and offered a fast, low-impact installation method ideal for the challenging ground conditions.

As part of this project, **FLI also developed new pile caps** to support the rebar mesh of the concrete platform, and **introduced bespoke pile stillages to improve programme efficiency** and reduce downtime between pile section installs.



Learn more: To learn more about this project get in touch. To read more case studies on our work visit <https://www.fli.co.uk/>

Nick Goodman
Towers & Radar

nickg@fli.co.uk
07790 103 747

Tony Parker
Sales Manager

tonyp@fli.co.uk
07738 623 487

Ben Hawke
Foundations

benh@fli.co.uk
07709 842 066

Martin Nicholls
Monopoles

martinn@fli.co.uk
07729 116 341